



Climate Conversations Recycle

St Mark's Creation Care Ministry

April 2023



Agenda

- Land Acknowledgement and Opening Prayer
- A Framework to Recycle and Opportunities to Recycle
- Discussion
- How Recycling Works
- Sharing and Q&A
- Closing Prayer

We Have Too Much Stuff

- Global domestic material consumption rose by more than 65%, to 95.1 billion metric tons in 2019.
- Globally, 5.3 billion mobile phones were thrown away in 2022
- >116 billion pounds of plastic produced in the US annually, with over 50% for packaging, and only 8.7% is recycled
- Americans buy more than 60 pieces of new clothing on average per year, 5X the amount in 1980



We Waste Too Much

The total amount of waste includes:

- Clothing: 11.3 million tons/year, or 81.5 pounds/person, or 2150 pieces/second
- Furniture: 9.6 million tons/year
- Appliances: 3.7 million tons/year
 - 5% of small appliances are recycled
- 2.4 million tons of carpets
- Other (electronics, luggage, sporting goods): 23 million tons
- (*1 million tons ~ 150,000 elephants*)



Source: <https://www.epa.gov/facts-and-figures-about-materials-waste-and-recycling/durable-goods-product-specific-data>
<https://recyclist.co/blog/making-sense-of-big-numbers-in-a-big-industry/>

More Recycling is Needed

- In the US in 2018, 292.4 million tons of Municipal Solid Waste were generated.
 - About 94 million tons of MSW were recycled and composted, for a 32% recycling rate.
- Globally, rising material extraction has shrunk global circularity from 9.1% in 2018 to 7.2% in 2023
- 90% of materials are wasted, lost or unavailable
- A global circular economy will allow us to fulfil people's needs with only 70% of the materials we now extract and use



Scripture Supports Recycling

- Jeremiah 18: I went down to the potter's house, and there he was working at his wheel. And the vessel he was making of clay was spoiled in the potter's hand, and he reworked it into another vessel, as it seemed good to the potter to do.
- John 6: When they had eaten their fill, he told his disciples, "Gather up the leftover fragments, that nothing may be lost."
- Matthew 5: Give to the one who asks you, and do not turn away from the one who wants to borrow from you.
- Recycle your bible
 - <https://www.biblesenders.org> or <http://www.bf.org/bibledrive/cc.htm>





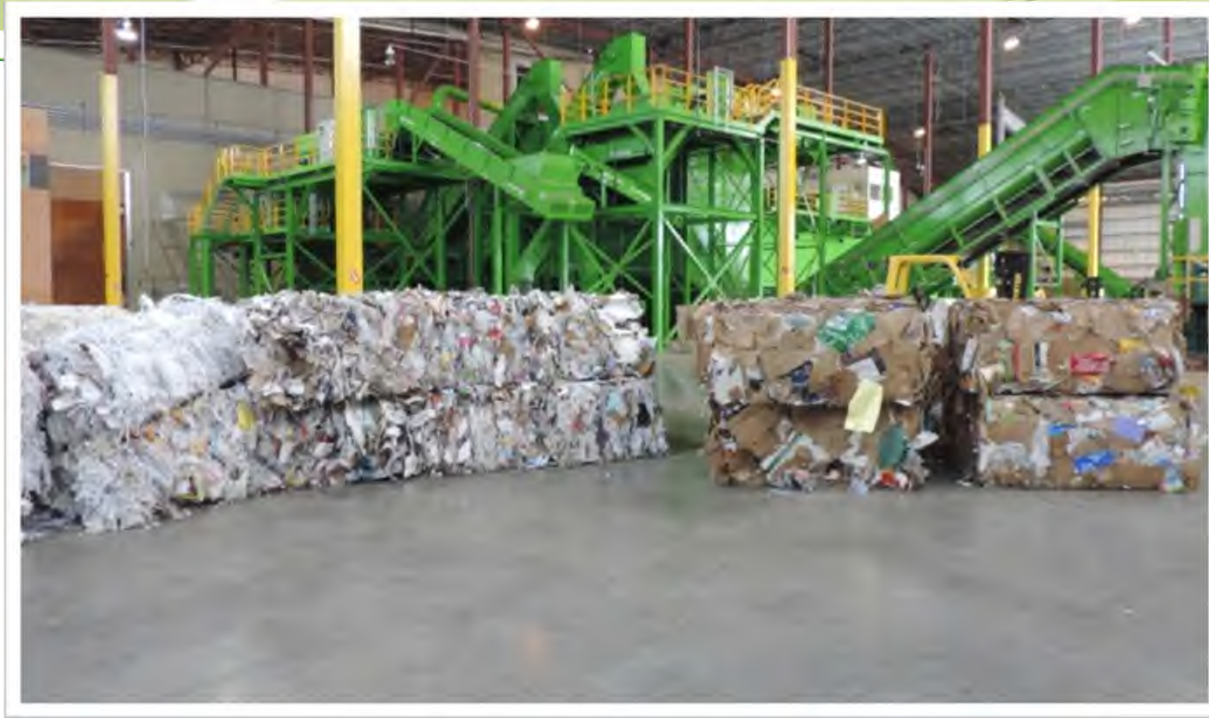
RECYCLING WITH RECOLOGY



Recology King County | 2023

Who We Are

- ▶ Employee-owned
- ▶ Hauler & processor
- ▶ 11 Puget Sound communities



- ▶ Streetscapes
- ▶ Retail storefronts
- ▶ Public education, waste consulting

Mission

- Reduce tons sent to landfill
- Recover resources
- Educate the public on the benefits of diversion to our planet and the communities we serve





Marketplace

if only nature would find a way to cover these oranges so we didn't need to waste so much plastic on them.



Whole Foods Market @WholeFoods · 3 Mar 2016

Replying to @awliinatty

@awliinatty Definitely our mistake. These have been... we will leave them in their natural packaging: the p...

150 340 857



United States of Plastic

Plastic wrapped in plastic: the wasteful reality of America's grocery stores

▲ Photograph: Jenica Peñalosa/The Guardian

WHAT IS RECYCLING?



Contamination

- Plastic bags, hoses, etc. get caught in the spinning discs of the sorting equipment
- Small items like forks, spoons, and bottle caps end up in the glass stream
- Liquids & food waste contaminate paper & cardboard



Common Contaminants

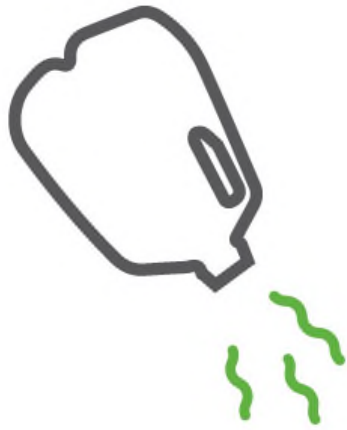


Contamination

- Plastic bags, hoses, etc. get caught in the spinning discs of the sorting equipment
- Liquids & food waste contaminate paper & cardboard



How to Recycle Right



EMPTY



CLEAN



DRY

How to Recycle Right

Packaging Must be Clean to be Recyclable

Recyclable



Clean

Garbage



Dirty

How to Recycle Right



No shredded
paper

Keep it loose!



No plastic bags
or wrap

Discussion & Breakout Session

Questions:

- What are the biggest difficulties you have with recycling?
- How can you figure out whether an item is recyclable?
- What steps can you take to recycle more items?



WHERE DOES YOUR GARBAGE GO?



Where Does Recycling Go?



Recyclables are sorted, baled, and made into new items.

Recology MRF

- First Built in 2014
- Processes 300 tons of material per day
- Mix of hand sorting and technology
- Average contamination rate near 10%
- All employees are full time employee owners





SPECIAL ITEM RECYCLING



BagandFilmRecycling.org



Home

Find a Drop-Off

What to Recycle

FAQs

About

Sponsors

Recycle Your Plastic Bags, Film and Wrap at Participating Locations

Enter your zip code or address below to find participating drop-off locations in the United States.

Most curbside recycling programs do not currently accept plastic bags, film, and wrap.

Store drop-off programs have been the primary means of recovering **clean and dry** bags, film, and wrap for more than 20 years. Retailers usually consolidate the material with other film like pallet wrap at their distribution centers and then sell the material to companies making products like composite lumber.

Find a Drop-Off Location in the United States:



“King County What do I do with”

Solid Waste Division

What do I do with...?
Search
Materials list







Home » Services » Recycling & garbage » Solid Waste Division » What do I do with...? » Search

What do I do with...?

Find businesses that accept materials for recycling, donations and disposal.

What do you want to get rid of?
Type any material name

[Browse complete materials list >](#)

-  Appliances
-  Batteries
-  Construction / Demolition Debris
-  Electronics
-  Furniture
-  Landscaping / Landclearing

What do you want to get rid of?
Refrigerators, Freezers

Serves
 Residents Businesses Either

Options & restrictions

Drop off (17 Results) | Pick up (5 Results) | Mail in (0 Results)

Sort by: Distance

- 1 FACTORIA RECYCLING & TRANSFER STATION**
13800 SE 32nd St 8.5 miles
206-477-4466
- 2 KING & BUNNY'S APPLIANCE**
4608 NE Sunset Blvd. 8.6 miles
425-277-0600
- 3 1 GREEN PLANET**
851 Houser Way N 10.5 miles
425-996-3313
- 4 HABITAT FOR HUMANITY STORE**
1185 Andover Park West 14.6 miles

Map | Satellite

Do more online | Get help | Español

Sharing, Discussion and Q&A

Questions

- What was most interesting or new about the recycling information you heard?
- How can we share more information about recycling with the congregation at St Mark's?





Email us at RKCWasteZero@recology.com

Or follow us on social media



@recologykingcounty



@RecologyKC

QUESTIONS?

Make a Difference

“We can change the world and make it a better place. It is in our hands to make a difference.”

— Nelson Mandela

“I have one life and one chance to make it count for something... My faith demands that I do whatever I can, wherever I am, whenever I can, for as long as I can with whatever I have to try to make a difference.”

— Jimmy Carter

Closing Prayer

Prayer

