

# THE RUBRIC

STORIES OF MINISTRY

SAINT MARK'S EPISCOPAL CATHEDRAL, SEATTLE, WA

SPRING 2026, VOL. 83, NO. 1





SAINT MARK'S  
EPISCOPAL CATHEDRAL

WELCOME  
INSPIRE  
TRANSFORM  
SERVE

*Wherever you are  
on your spiritual journey,  
you are welcome here.*

THE VERY REV. STEVEN L. THOMASON  
*Dean & Rector*

MARIA COLDWELL  
*Editor*

KEVIN JOHNSON  
*Photography*

SAMANTHA CLARE  
*Design*

*The Rubric* is a publication of Saint Mark's Cathedral, Seattle, which celebrates who we are as a community—as a parish, as a cathedral for the Diocese of Olympia, as Episcopalians, and as Christians.

GREETINGS  
*from the* DEAN

Dear friends,

In recent weeks and months, in these challenging times, countless people have asked me: What is Saint Mark's doing to respond? My answer, in one way or another, conveys my conviction that we are called, as a community of faith and as followers of Christ, to carry on our mission. To be the Church in a bewildered world is not a reactionary flash in the pan; it is about staying the course. This issue of the Rubric, while not developed with that question specifically in mind, tells our story of staying the course as a faithful witness to God's dream for humanity, and to the values of human dignity and solidarity while also striving for the care of all creation.

Affordable housing, community engagement, serving children at Lowell Elementary, and the work of racial justice are missional commitments, not just "projects" to undertake for a time. They will change the shape of this community, and with God's help (as our baptismal covenant invites), they will change the world for good. Similarly, our commitment to migrant justice didn't begin on inauguration day 2025, nor will it end at some certain date in the future. It may morph over time, as it has across the last five decades here at Saint Mark's, but the thread is woven into the storied fabric of ministry seeking and serving Christ in all persons. Canon Griffin's article is a touchstone in that fabric of faithfulness.

The TERRA exhibition served as source of inspiration for thousands who entered the cathedral during those three weeks in November to contemplate the global community and our place in it. Creation care remains a core commitment at Saint Mark's, and construction projects on the horizon, made possible by the generosity of hundreds, are guided by that commitment to do our part in addressing the care of creation.

Finally, let me say how heartwarming it is to see how this cathedral community takes shape in creative, dynamic, and life-giving ways. We make the journey together. And, it is our practice in the first issue of the Rubric each year to publish the names of all who financially supported the cathedral's mission and ministries in 2025, including 53 households who wish to remain anonymous. In all, more than 2000 donors—the most ever!—gave to Saint Mark's last year. I thank God for all of you, and I thank you for your part in this wonderful cathedral.

Gratefully yours,

The Very Rev. Steven L. Thomason, Dean & Rector



## LITURGICAL SCHEDULE

\* indicates livestreamed service

### SUNDAYS

8 A.M.

The Holy Eucharist

9 A.M.

The Holy Eucharist

11 A.M.

\* The Holy Eucharist

4:30 P.M.

\* Choral Evensong

(first Sunday of the month, October–June)

7 P.M.

Contemplative Eucharist

9:30 P.M.

The Office of Compline

broadcast on KING 98.1 FM

### WEEKDAYS

MONDAY–FRIDAY, 7:30 A.M.

Morning Prayer *online via Zoom*

MONDAY–FRIDAY, 6 P.M.

Evening Prayer *online via Zoom*

MONDAY, 6:30 P.M.

Cathedral Yoga

*in person in the cathedral nave*

TUESDAY, 7 P.M.

Contemplative Prayer

*in person in the cathedral nave*

\* Taizé Prayer

*replaces Contemplative Prayer on the second Tuesday of most months.*

WEDNESDAY, 6 P.M.

Cathedral Commons

*in-person community supper followed by a forum or presentation, usually also available online via Zoom*

THURSDAY, 7:30 A.M.

The Holy Eucharist

*in person in Thomsen Chapel*

*(1<sup>st</sup>/3<sup>rd</sup>/5<sup>th</sup> Thursdays of the month only)*



## SPRING 2026 *Contents*

- |   |  |
|---|--|
| 4 AFFORDABLE HOUSING UPDATE                                     | 14 CATHEDRAL HOUSE GETS NEW HVAC SYSTEM                                |
| 6 BUILDING COMMUNITY<br><i>our community based organization</i> | 15 A NEW PRAYER SPACE IN THE NAVE                                      |
| 8 OUR NEIGHBORS AT LOWELL SCHOOL                                | 16 LOVING OUR MIGRANT NEIGHBORS  |
| 9 STAFF UPDATES   | 18 INSPIRATION AND COMMUNITY:<br><i>the saint mark's writers group</i> |
| 10 A TERRA RETROSPECTIVE  | 20 CATHEDRAL DONORS  |
| 12 CANON KLEINSCHMIDT TREKS IN THE HIMALAYAS                    |  |

▲ ON THE COVER: Terra Exhibit ABOVE:  
Blessing of the Animals (photos by Kevin Johnson)



# UPDATES FROM THE AFFORDABLE HOUSING COMMITTEE

by John Hoerster, Chair

**T**HE MEMBERS of the Affordable Housing Committee (Karen Maeda Allman, Stone Fennell, Greg Hamm, John Hoerster, Bethany Hoy, Re Knack, Scott Kovacs, and Dean Steve Thomason) were delighted to announce in the Fall 2025 *Rubric* and at a special parish forum that Redwood Housing had been selected as our development partner for the St. Nicholas Affordable Housing Project, and that Saint Mark's and Redwood had entered into a Memorandum of Agreement (MOA) outlining key terms of the Saint Mark's/Redwood partnership. The MOA was a major and exciting step forward that has spurred a lot of positive momentum.

Here are just some of the actions taken in the few months since the Fall 2025 *Rubric* update:

- **Executing a Joint Development Agreement (JDA)** between Saint Mark's and Redwood. The JDA (1) confirms important shared mission goals, (2) addresses formation of a Partnership in which Redwood and Saint Mark's (or affiliates) are general partners, (3) requires Saint Mark's approval of major Partnership decisions, (4) compensates Saint Mark's for contributing the St. Nicholas site to the Partnership, (5) gives Saint Mark's permanent site control as necessary to assure mission fulfillment, (6) confirms that Saint Mark's will participate in the Partnership without financial liability, (7) sets the Partnership percentages of Saint Mark's and Redwood for the Project's

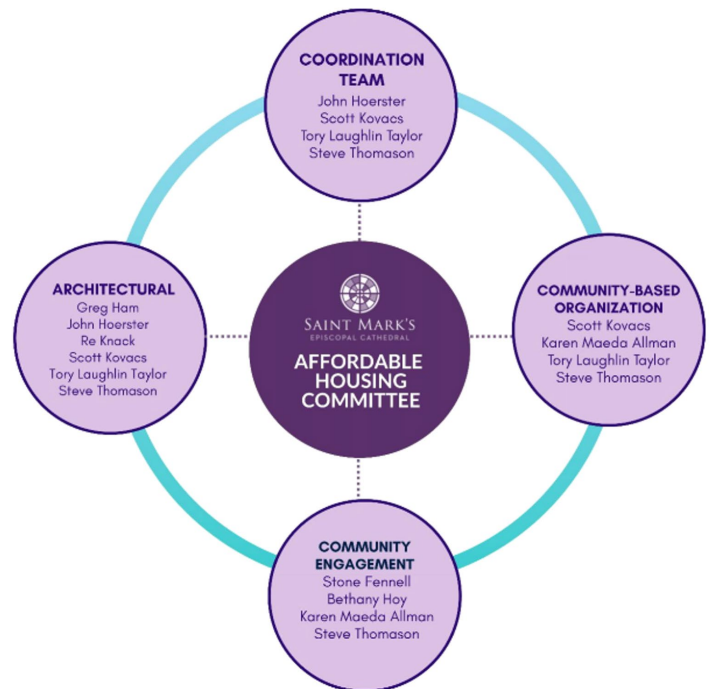
▲ Schematic (preliminary) designs by Perkins Eastman architects.

economic proceeds, and (8) provides for Saint Mark's ownership and control of "Third Places" within the development that bring together Project residents, parishioners, and the broader community.

- **Selecting Perkins Eastman as project architects and RAFN as general contractors**, followed by several sessions with Redwood and Saint Mark's to refine the Project's architectural design. (Proving that a picture is worth 1,000 words, this article includes a few design illustrations).
- **Refining the Project:** intergenerational, family-oriented, independent living; 135 units (15% studio, 44% 1 bedroom, 30% 2 bedroom, 11% 3 bedroom); affordability split of units between 50% and 60% of area average median income; adaptive reuse of landmarked St. Nicholas building plus new six-story building; positive contribution to Saint Mark's goal to be carbon neutral by 2030.
- **Obtaining two market studies** that support Project viability.
- **Applying for Low Income Housing Tax Credit financing.** In December, Redwood with Saint Mark's assistance completed and submitted an application to the Washington State Housing Finance Commission of an application for Low Income Housing Tax Credit financing.
- **Selecting Uncommon Bridges** as a consultant to help refine and implement the community engagement plan that was developed by Redwood and Saint Mark's and that focuses on four groups: parishioners; members of the Black community; neighbors and local businesses; and community organizations and public officials.
- **Selecting Kendall Clawson/Northwest Leadership Consulting** to consult on design, formation, and development of a Community-Based Organization (CBO) that is both affiliated with Saint Mark's and meaningfully representative of the Black Community that has been harmed by housing inequities. Kendall has a separate article in this *Rubric* discussing her vitally important work to help guide the emerging CBO's vision and governance.
- **Applying for and receiving a Trinity New York grant of \$150,000** to support the launch of the CBO and finalize our predevelopment activities. (We have now received three grants from Trinity totaling \$400,000; these grants and Trinity's related programmatic support have been a blessing.)
- **Holding a Special Parish Forum** on December

10, 2025 to update the parish about the project and introduce Redwood Housing, Uncommon Bridges, and Kendall Clawson. Slides and video of the forum are available on the Affordable Housing page of the Cathedral's website.

Upon execution of the JDA last October, the Project entered an important new chapter in which the Affordable Housing Committee's work has increased significantly both in time and complexity. As a result, the Committee has reorganized to assure effective coordination of efforts and take advantage of members' interests moving forward. The Committee plan is nicely illustrated by this chart:



We have been warned from the very beginning that there will likely be unexpected challenges and delays. So far, though, we remain on track to meet the Project timeline of starting construction in the first quarter of 2028 and taking occupancy in the third quarter of 2029.

To stay current as the Project moves forward, visit [www.saintmarks.org/affordablehousing](http://www.saintmarks.org/affordablehousing). And please ask questions and offer your comments and suggestions at [affordablehousing@saintmarks.org](mailto:affordablehousing@saintmarks.org).

Let me close with a quote from Dean Thomason about our mission:

*Neighborhoods matter to the fabric and well-being of families. Saint Mark's, alongside the CBO, will be focused on creating lasting change in affordable housing access in an area that has experienced the historical legacy of racial discrimination on Capitol Hill.* ♦



# BUILDING COMMUNITY: OUR CBO JOURNEY BEGINS

by Kendall Clawson

I AM THE CBO (Community Based Organization) Consultant working with Saint Mark's Cathedral on its Affordable Housing Project. I can't tell you how excited I am to be a part of this project because from the moment that I read the request for proposals, I knew that Saint Mark's was doing something special that I wanted to be involved with. In these times of upheaval and pain for so many people in our community, the idea of building something beautiful felt like a gift—a reprieve from actions and beliefs that create division—and frankly, it was a glimmer of hope for a sense of humanity that I think we all need. And with a lot of sharing, some prayer, and a lot of gratitude, this gift arrived at my doorstep.

Now that I am involved, I would like to begin sharing what we are thinking about and planning for the future of the Community Based Organization. There are a lot of moving parts to the Affordable Housing Project. What does the footprint look like...

what is the square footage of the apartments...where will the HVAC live? Those are all important details that our development partners are steadily designing as the project moves forward. But for the purpose of this article, we are talking about the other side of the project, the part that directly connects to **why** we are building an Affordable Housing Project at Saint Mark's, and most importantly, who we hope to be in community with in the future.

When we talk about creating Affordable Housing at Saint Mark's, we're not just talking about crafting beautiful buildings on the tree-lined streets of North Capitol Hill. We are examining the deep roots that are connected to Black people whose footprints are present on every street. We are listening to the faint memories of Black children jumping rope on the sidewalks. We are placing our hands on the fingerprints of Black leaders and businesspeople who created what was once a thriving center of the Black community in

Seattle...their heartbeats pulsating on our palms. And most importantly, we are talking about a homecoming for members of the Black community who were most impacted by the sins born of racism in Capitol Hill.

The insidious acts of redlining, so-called "urban renewal," and a thousand smaller acts of exclusion that severed those roots for hundreds of Black families altered the history of North Capitol Hill. The most basic expectation that one can have a place to call home was stripped away, and as painful as it is to acknowledge, there were folks connected to Saint Mark's back then who were complicit in this displacement. Whether it was through active participation or their silence, this is part of our story too. But our story does not and will not end on this note that evokes shame and change paralysis. We have a plan.

Saint Mark's has long centered its mission on housing and hunger—the most fundamental of human needs. We have talked about these

commitments, preached about them, studied them. Now, this Affordable Housing Project and its Community Based Organization offer us something more: the chance to live through our commitment to our mission. They invite us to pause and examine with open eyes and hearts the history that brought us to this moment. They encourage us to move past seeking answers or resolve in the moment because we have never been challenged to sit quietly and absorb what our history has created. Rather than accepting the privilege to shake off our responsibilities with “It wasn’t me. I didn’t do it,” we have the opportunity to model bravery when faced with an ugly truth. This, friends, is where our values meet the pavement, where truth-telling about housing injustice and harms done to the Black community move from liturgy into action.

This does beg the question: why focus specifically on the Black community when many communities of color face housing inequities? It’s true that redlining and displacement have wounded many communities. But it was the Black community who called this neighborhood home, who were pushed out from the very ground where our cathedral now stands. To build forward without looking back, to welcome “everyone” without naming who was explicitly harmed, would be to repeat the erasure.

This is why we’re not just building housing—we’re building a Community Based Organization designed and led with and for the communities most impacted by this history. We believe that having a strong Community Based Organization is the unifying force that will tie our missional work of housing and hunger to the space that we are building. That includes being purposeful in how we build the CBO’s components.

Here are some of the basics: we are actively working to assemble a diverse Board of Directors who will help us govern and lead the CBO via accompaniment and whose majority will be members of the Black community. Additionally, rather than relying on an outside management company, we want to incorporate the management of the building into the CBO so that our people can be a part of the daily buzz of getting kids off to school, celebrating a neighbor’s birthday or graduation, deciding how to use our outside spaces, and building supportive programming that emphasizes our missional work through the operation of the CBO.

Having a CBO also allows us to create what is often called a “third place”—not church, not home, but a shared space that connects the two... where genuine community happens. It invites us into a singular, cherished community of people committed not to talking about justice, but to doing it together. This isn’t Saint Mark’s doing ministry for others; this is all of us—parishioners, residents, community members—building something together. The work itself becomes the community. And the doing of the work supports our way of being as a community.

To be honest with you, this work asks something of us as a largely white congregation. It asks us to sit with discomfort, to move beyond guilt

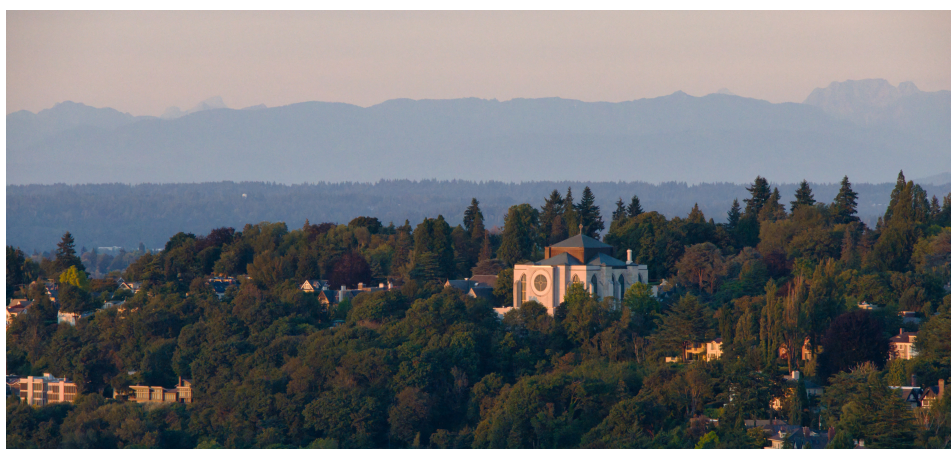
into action, to learn what genuine allyship looks like. It asks us to understand that repentance isn’t just saying sorry. It’s turning around, changing direction, making different choices. It asks us to show up not as experts or saviors, but as partners and learners.

Here’s what fills me with hope: we have the opportunity to participate in restoration. To help families return to a neighborhood that holds their history. To build a community that doesn’t erase the past but honors it; that doesn’t offer charity but shares power; that doesn’t simply open doors but asks...who should be holding the keys?

This is ministry in its deepest sense. This is sacred work.

Not because it’s easy or comfortable, but because it offers us the chance to participate in something larger than ourselves—the slow, patient work of justice, the possibility of community that includes rather than excludes, the hope of home for those who should never have been forced to leave in the first place. The path forward begins by acknowledging the path behind. And then, together, we shall build community.

Thanks for the opportunity to be on this journey with you, and I look forward to connecting with you all as we move forward together. ♦



# OUR NEIGHBORS AT LOWELL SCHOOL

by Cherie Bradshaw

**A**S PART of Saint Mark's broader commitment to social justice ministry, the cathedral community has actively responded to the needs of students and families at Lowell Elementary School, our nearby neighbors, with amazing generosity. Never was this more evident than in November 2025, following an appeal by Dean Thomason, to help Lowell families address the suspension of SNAP benefits. The response was overwhelming, with a flood of food donations, grocery cards, and other forms of financial support totaling over \$40,000!

As many of you know, the Lowell community is a diverse and vibrant one. There are over thirty different languages represented. The population includes all kinds of learners, such as those exceeding grade standards, those with mild to significant disabilities, students eligible for free and reduced lunch, and families who are unhoused or in transitional housing. The attendance zone is a very large one, including downtown Seattle, South Lake Union, Belltown, and south to the International District. The zone includes two Mary's Place locations and various downtown shelters. Lowell is also one of three public schools in Seattle who serve medically fragile students. The staff at Lowell Elementary is very dedicated to providing all the opportunities an urban school has to offer. Above all, Lowell provides a warm, caring place for students and the families it serves.

A medical clinic, run by Odessa Brown/Seattle Children's Hospital, is housed onsite; it is staffed by a pediatric physician and a mental health



practitioner. A Food Pantry, resembling a small store, is stocked with fresh fruits and vegetables, canned and dry goods. A full-sized refrigerator is stocked with milk and eggs. Along with food items, hygiene products are available to families. The pantry is operated by the Urban League of Seattle. There is also a Clothing Closet, with donated items including sweatpants sets, leggings, outerwear, and other things for pre-K through 5th-grade students.

Recently, when asked about words that describe the Saint Mark's partnership with Lowell School, Chelsea, the school's Principal, and Angela, its Social Worker, responded with "forward-thinking," "consistent," "compassionate," and "responsive." They placed an emphasis on the critical value of the Threshold Fund at Saint Mark's. Just this year Saint Mark's helped a family that was unhoused to bridge the gap into permanent housing, while another family relocated into a safe housing development, thanks to the fund.

Currently there are Saint Mark's parishioners who volunteer regularly

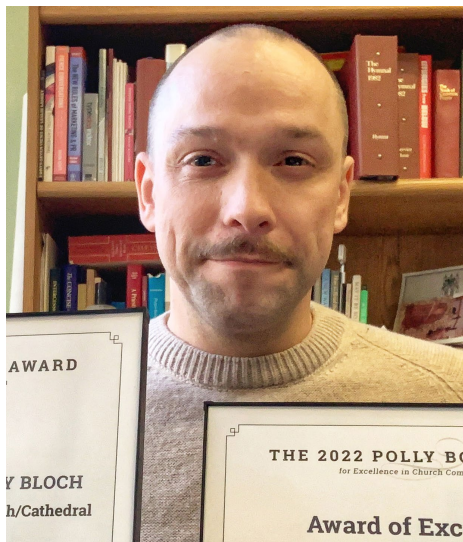
to support students within the classroom. On January 18th, the cathedral hosted an Afternoon of Service, where cards for Lowell staff were made, to be presented during Staff Appreciation Week in May. Another appeal for baked goods, flowers, and financial support will be coordinated with the Staff Appreciation Week. And following a request made by the school Principal, a comprehensive litter pick-up spanning the neighborhood surrounding the school is in the works.

Lowell appreciates donations made via the Giving Tree during Advent as well as online giving at the start of the school year for supplemental classroom supplies, and volunteers handing out backpacks during the "welcome-back to school" event on the playground.

Saint Mark's proudly supports our wonderful diverse neighborhood school in its mission. By showing up in a myriad of ways throughout the year, the Holy Spirit breathes life into the partnership between Lowell School and Saint Mark's, shaping us all into "beloved community." ♦

# STAFF UPDATES

by Maria Coldwell



▲ Greg Bloch

**S**AINT MARK'S CELEBRATED Greg Bloch's service of over a decade on the Cathedral staff after the 11am service on December 28, 2025. Greg resigned from his position as Communications Director, effective December 31st. He joined the Cathedral staff in 2014, first as a part-time worker in the Cathedral Shop, then as Communications Assistant, before assuming the role of Communications Director in 2019. After some time away visiting family in Europe, Greg will continue to make his spiritual home at Saint Mark's, where his service in the music ministries has been and will continue to be a source of blessing to us all.

Seth Thomsen joined the Cathedral staff in December as Livestream Coordinator and Media Specialist (a part-time position). Seth has served for the past five years as director of livestreaming at Saint Paul's Episcopal Church in Seattle, and he brings a



▲ Seth Thomsen

wealth of knowledge and experience in multi-track recording and audio engineering as well as film and visual media.

Seth will guide the Cathedral's dynamic livestream ministry, which reached more than 100,000 people last year, from all 50 states and 21 countries. In this role he will also support volunteers in livestreaming our worship services and special events and provide technical support for our hybrid educational offerings in Bloedel Hall. As the Cathedral's Media Specialist, he will serve as curator of all the Cathedral's audiovisual systems and equipment.

David Poortinga began serving as Cathedral Worship Coordinator as of January 1st. Since late July, David has been serving faithfully as Interim Liturgical Assistant. For these past several months, we have been discerning what kind of staffing is needed at this time to effectively support the worship life of the Ca-



▲ David Poortinga

thedral community. David's new role is informed by that learning process. In addition to preparations for Sunday liturgies, David will expand his support to the full range of our seasonal, Diocesan and interfaith services. He will also lead our vergers and support the clergy and our other liturgical ministry leaders in their recruitment, scheduling, and training efforts. David brings a love of liturgy, a keen curiosity for learning, and a collaborative and affable spirit to this ministry.

As part of the restructuring of our liturgical leadership, David's new role remains part-time, normally 20-25 hours per week. Canon Griffin and the staff clergy are also taking on more responsibilities in the area of liturgy and worship, and Hannah Hochkeppel will continue serving as Wedding and Funeral Coordinator, assisting the clergy and walking alongside couples and families in their planning. ♦



# A Terra Retrospective

by S. Wayne Duncan

FROM NOVEMBER 2-23, 2025, Saint Mark's Cathedral worshippers were greeted by Terra, a huge globe of the Earth, twenty-four feet in diameter and rotating from the cathedral's ceiling. This three-week Terra Exhibition allowed thousands of visitors

to Saint Mark's to experience the sight of the Earth's vast oceans and continents without country borders or names. Expressions of excitement and wonder were often heard as visitors entered the nave and saw the stunning, slowly turning Terra.

In his sermon on the inaugural day of the exhibit, November 2, Dean Steve Thomason provided the history

of Apollo 8 orbiting the moon and astronaut William Anders taking the photo on Christmas Eve 1968 from 238,000 miles away. Dean Thomason encouraged viewers of this Terra to "consider the global indications of our common humanity, or our fragile island home and the threats to it..."

Over the following three weeks, visitors entered the nave to see this

modern Terra, based on a composite of thousands of NASA photographs and satellite images. Built on Orcas Island by Eric Morris, the Saint Mark's exhibit attracted individuals from all over the Seattle area. Yoga classes occurred with Terra internally lighted and rotating above them, and a Taizé-inspired service included prayers and music for creation. Saint Mark's Visual Arts Ministry member Maria Do designed a reflection kiosk exhibit that engaged visitors and encouraged them to reflect on the health of the planet.

On Friday, November 14th, the Rev. Lisa Graumlich, Ph.D., Episcopal deacon and climate scientist, presented a talk about "Thin Places: Climate Change & Seeing Earth Whole." She encouraged the audience to consider the Earth as a planetary body with circulatory, respiratory, and regulatory systems that are being pushed to their limits, "destabilizing the relationships that make life possible and that have held for millions of years." She said that climate change is a spiritual crisis that requires prophetic transformation and our working together as a community

with faithfulness. She urged us to live "for a future beyond our eyes," just as the builders of cathedrals did in centuries past—taking actions to preserve the health of the planet that will benefit the generations to come. Following her talk, the Rev. Graumlich engaged in a question-and-answer session, led by Dean Thomason. Her talk and conversation can be found at <https://saintmarks.org/2025/11/thin-places-climate-change-and-seeing-earth-whole/>. She also met with Saint Mark's youth for a discussion about climate change, helping the next generation grasp the reality of what we are facing. As part of the evening, there was a community resource fair, organized by Saint Mark's Visual Arts Ministry, where twelve community organizations and church creation care and climate justice groups shared information about their current programs and plans for 2026.

On Saturday, Nov. 22, Terra Exhibition co-producer Ben Browner organized a thousand-participant event ("The Circle") that included Indigenous storytelling and song as

well as a wide range of musical performances and participatory singing. The cathedral nave was bathed in creative lighting as multiple groups performed throughout the five-hour program. Browner and Morris hope that the Saint Mark's exhibition of Terra will be the first of many installations across the country, including some at other Episcopal cathedrals. ♦

**The following groups participated in the community resource fair:**

Duwamish River Community Coalition, Empower Me, Faith Action Network, Save Our Wild Salmon, Third Act Washington, and Tree Action Seattle \* Climate justice and creation care groups from the Episcopal Diocese of Olympia, First Church [United Methodist], St. James Cathedral, St. Joseph Parish, University Unitarian Church, and Saint Mark's Cathedral \* Saint Mark's Intergenerational Ministries provided intergenerational resources related to creation care, and the Queen Anne Book Company displayed books on climate change.



▲ **ACROSS TOP LEFT:** Terra in the dark nave. **ACROSS TOP RIGHT AND BOTTOM LEFT:** The Rev. Lisa Graumlich, Ph.D. presents on "Thin Places". **BOTTOM RIGHT:** Terra hangs above the welcoming of the newly Baptized on All Saints Sunday, 2025. (photos by Kevin Johnson and Wayne Duncan) **ABOVE:** Resource Fair and Reflections Kiosks.



# CANON KLEINSCHMIDT TREKS IN THE HIMALAYAS

*Canon Michael Kleinschmidt took a month of sabbatical time last fall to join a group of Seattle Mountaineers on an 18-day trek through the Khumbu valley in the Himalayas of Nepal. The trek began and ended in the village of Lukla, 84 miles from Nepal's capitol city, Kathmandu.*

by Canon Michael Kleinschmidt

**S**ITTING in the common room of a guest house in the village of Lukla, Nepal, on All Saints Day, November 1, 2025, I wrote in my journal: This began as a sabbatical, then took on the flavor of pilgrimage, and now feels a lot like the pandemic lockdown. It was the fifth day of non-stop rain. The village was filling fast with trekkers and climbers who, like me and my companions, were eager to get to Kathmandu to connect with scheduled flights home. Apart from walking or riding a beast of burden,

the only way out was by helicopter or twin-engine propeller plane on one of the world's shortest runways. But Lukla, at 9,000 feet, was socked in. No flying allowed. Our moods fluctuated wildly between desperation and resignation.

Six days earlier we exulted in the thrill of hiking across Ngozumpa Glacier. Flowing from Cho Oyu (26,862') southward for 22 miles, it is the longest in the Himalayas. We stopped for a late lunch in the lakeside village of Gokyo. There we learned of a storm that was expected

to dump one to two feet of snow at our elevation (15,600') that night. We needed to get down fast. Our local guides summoned three helicopters which in ten minutes of flying time undid all that we had achieved in fourteen days of hiking.

Those fourteen days were dazzling! Under crystal clear, indigo skies, we beheld some of earth's most dramatic landscapes. We climbed to a ridge at 18,500' and stared in wonder at Mount Everest. We drained our camera batteries trying to capture the stunning beauty of Ama dablam.

We engaged a culture saturated with signs and symbols of prayer practices in the Tibetan Buddhist tradition.

We learned from our Sherpa guides that “In the Khumbu Valley, it is not your money but your relationships that will sustain you.” Thupden Sherpa, our head guide, made this abundantly clear when, on November 2 – the sixth day of our Lukla lockdown – he learned from a trusted colleague that some chopper pilots were landing safely in a farmer’s field just under the cloud deck in a village 1000’ below us. If we could just get ourselves down there, we might have a chance at getting out. What did we have to lose? We hiked hastily down to the spot and in five minutes we were airborne on our way to Kathmandu.

I think that habits formed by life in the workaday world can become a kind of narcotic. One of the greatest gifts of sabbatical time is learning how to live without that narcotic. While we were on the move, my trekking companions and I enjoyed the spell cast upon us by the mountains and our agenda of carefully calibrated daily elevation gains. But, as soon as we were forced to abandon our itinerary, and simply watch and wait, I must admit that I became very uncomfortable. These words of a wise monk come to mind:

*Work is not bad. Even the most contemplative among us must work. But work serves an end. Even the holiest work of your life is not your purpose. It facilitates your purpose, and your purpose is encounter: The welcoming of the eternal, living God into your midst.* – Br. Lucas Hall, SSJE

Indeed, my trek among the mountains of Nepal was memorably thrilling. But lessons about the art of merely being, taught to me during my last five days in rainy Lukla, are what I pray will be with me forever. ♦



▲ **ACROSS** Canon Kleinschmidt with local guide, Kusang Sherpa, and fellow Seattle Mountaineer, Andy. Everest (29,032') looms at left, behind pointy-peaked Nuptse (25,792'). Photo taken on Kala Patthar (18,500') a point on the southern ridge of Pumori (23,494') west of Everest. **TOP** Our trekking group on a ridge above village of Dingboche (14,469'). Head guide, Thupden Sherpa is on far left. Mountaineers' Global Adventure Leader, Cheryl, is fourth from left. Canon Kleinschmidt in center back. **MIDDLE LEFT** Welcome sign at entrance to Khumbu Valley in Sagarmatha National Park, Nepal. **MIDDLE RIGHT** Nepalese Monk. **LEFT** Ama dablam, 22,350' ("Mother's necklace" in the Sherpa language, describing its distinctive shape with long ridges like a mother's outstretched arms and a hanging glacier resembling a traditional pendant worn by Sherpa women.)

# BLOEDEL HALL AND CATHEDRAL HOUSE GET NEW HVAC SYSTEM

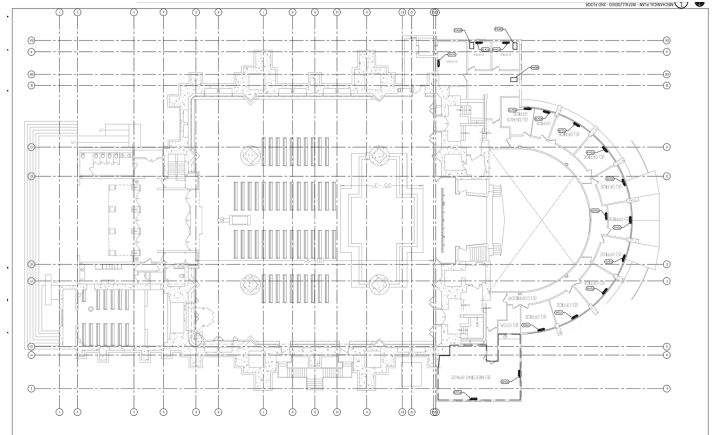
by Marc Aubertin

**A**S PART OF THE Living Stones II — Building a Sound Future capital campaign, Saint Mark's is planning and permitting a retrofit of the Cathedral House / Bloedel Hall HVAC system, converting from hot-water heating to Variable Refrigerant Flow (VRF) technology. This change will allow the campus to replace natural gas heating with electric VRF equipment. This will efficiently provide heating and cooling to Cathedral House, Bloedel Hall, and the second-level undercroft (crypt). Currently, those spaces are served by the main steam boiler that will be removed in a later construction phase.

Some background to this project: the 1958 west-end addition (including the parish hall built in memory of Julius and Mina Bloedel) has undergone multiple HVAC changes over the years. Early mechanical equipment no longer in use shows the main cathedral boiler once fed a shell-and-tube heat exchanger supplying fan-coil units and ceiling diffusers; those diffusers remain visible today. Later, likely during a fuel conversion and internal reconfiguration, two hot-water boilers and a new heating loop replaced the heat exchanger.

## Here is the scope of the HVAC renovation by floor level:

- Ground level (Bloedel Hall, kitchen, administrative offices): layout has been reconfigured over time; core kitchen, lavatories, and stage remain. The current hot-water loop serves this area and will be replaced by VRF equipment.
- Second level (undercroft/crypt beneath the Cathedral): currently heated by the main steam boiler; will be included in the VRF retrofit.
- Third level (staff offices, conference rooms): often too hot in summer and cold in winter; will gain improved comfort from the new VRF system.
- Fourth level (Cathedral worship space, narthex, lavatories): not included in this phase; will be addressed in a future construction phase. (NB: Thomsen Chapel has a separate, recently installed system.)
- Fifth level (choir room, sacristies, vesting rooms, storage): previously served by an inactive gas furnace with abandoned ceiling diffusers; now served by the



same hot-water loop as lower floors; will be converted to VRF.

## Here's what's going away:

- The twin gas-fired hot water boilers.
- Many of the heat convectors (registers) that you now see in offices and hallways and in the window ledge in Bloedel Hall.

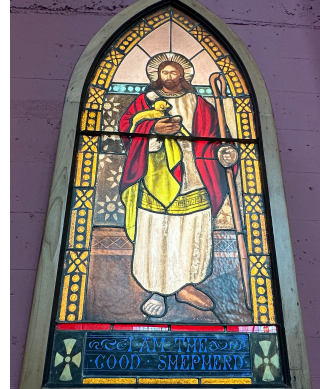
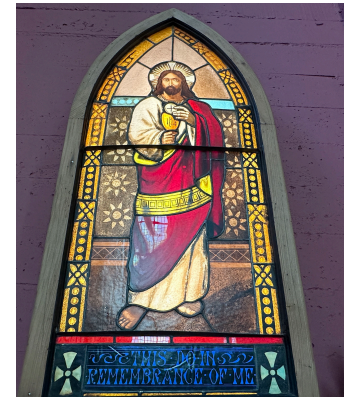
## Here's what will be added:

- New heating/cooling units within existing openings.
- Condensation drainage in offices, conference rooms, kitchen, hallways and Bloedel Hall.
- New rooftop condensing units and plumbing.

The retrofit will electrify heating and cooling, improve zoned comfort, and allow eventual removal of the main steam boiler.

Profound thanks to our dedicated partners Devin Yoshizumi, Eric Knowles and Mike Hatten and all the fine professionals of Solarc Energy Group for their work on this project. ♦

St. Mark's has been named an **Early Adopter in the WA Clean Buildings** program, recognizing the carbon reduction and energy efficiency improvements we have undertaken thus far. We believe we are on track to achieve our goal of being net carbon emissions zero on campus by 2030.



## A NEW PRAYER SPACE IN THE CATHEDRAL NAVE

by The Very Rev. Steve Thomason

**F**OR CENTURIES, cathedrals have set aside spaces around the perimeter of the nave for chapels, art installations, and places for individuals to sit in quiet prayer. At Saint Mark’s Cathedral, the northwest corner has served more as a place of storage than a focused prayer space. With help from Saint Mark’s Habitat for Humanity team, we have created a new place of prayer, with specially curated accoutrements that are designed to draw us into the numinous realm while also tethering us to our forebears in faith. These features include:

**1897 Altar**—this small altar was placed into service at Saint Paul’s Episcopal Church, Port Townsend, in 1897, and served that worshipping community for 127 years. Renovations in 2023 prompted construction of a new altar, so this one is held now in the cathedral for the Diocese of Olympia, honoring our connections with siblings at Saint Paul’s, which is the oldest Episcopal church building in the state of Washington (1865).

**1891 Brass Cross**—this cross was placed into service in 1891 at Saint Mark’s first church, at Fifth and Stewart. A gift of the “Chancel Guild” (aka Altar Guild), this cross is seen in photos for several decades, and we have brought

it out of archival storage for use in this space.

**1898 Stained Glass Windows**—these two of Jesus (and four more like them, of Matthew, Mark, Luke and John) are from Saint Mark’s second church, c. 1898, which stood on First Hill where the Polyclinic was recently located. The exact provenance of these windows is unknown, and we believe them to be much older. Jesus here is both Good Shepherd and Bread of Life.

**1931 Modesty Panels**—the white “sideboards” used to set apart this prayer space served as modesty panels for the front pews in the 1931 opening of Saint Mark’s third church, the one in which we now worship—Saint Mark’s Cathedral. When the center aisle pews were replaced with memorial chairs in 2018, these panels were stored and then cut down, restored and repurposed for this prayer space.

As people sit in prayer here, they may light a candle and perhaps consider how these objects invite us into the mystical sweet communion of saints. We remember how prayers from across the generations merge with ours to join the chorus of angels and archangels and all the company of heaven. ♦



# LOVING OUR MIGRANT NEIGHBORS

by The Rev. Canon Emily Griffin

**I**N THE BAPTISMAL COVENANT, we promise to seek and serve Christ in all people, loving our neighbors as ourselves. This past year in the realm of migrant justice, Saint Mark's lived into this promise in a variety of ways. When it became clear in January 2025 that houses of worship would no longer be considered "sensitive locations" for immigration enforcement, the Cathedral's leadership needed to reconsider what forms our solidarity would take. In our 2021 Statement of Lament and Commitment to Action, we committed to "offer sanctuary to and advocate for immigrants and their families and...oppose the deportations of immigrants in our broader community, all of us one human family." What would this commitment look like now? Housing families in danger of deportation on campus as a public advocacy tool, as we did from 2019 to 2021, no longer had the same impact and risked the

safety of those already vulnerable. So, rather than reviving a model of sanctuary that would no longer serve well, we spent 2025 strengthening partnerships that will help us love our migrant neighbors more effectively in this new time.

Last February, the Cathedral hosted an interfaith gathering with old and new community partners entitled *Do Justice, Love Mercy, Walk Humbly: Living Faithfully in Chaotic Times*. We reaffirmed our shared values, prayed together, and committed to magnifying our impact by working together across differences whenever possible. Since then, Saint Mark's also participates in a monthly gathering of local faith leaders centered around migrant justice – including representatives from the Archdiocese of Seattle, First Covenant Church, and Riverton Park United Methodist Church (RPUMC) – to share resources and best practices, build

relationships of trust, amplify our collective voice, and strengthen our advocacy and mutual aid network.

In addition, we partnered with the Washington Immigration Solidarity Network (WAISN) this past year to offer rapid response and accompaniment training here on campus. We formed a team at Saint Mark's to accompany community members and do safety planning with them as they comply with the law and attend immigration court hearings, ICE check-ins, and other related appointments that highlight their vulnerability. We are currently exploring partnerships with the Archdiocese of Seattle and the Jewish Coalition for Immigrant Justice NW to expand and deepen this critical work, and we continue partnering with WAISN for information and resource sharing.

Sometimes, solidarity means coming alongside others who have more experience offering direct support.



◀ Photos taken from the Do Justice, Love Mercy, Walk Humbly Interfaith Gathering on February 10, 2025

## Global Mission Grant

Saint Mark's has recently applied for a Global Mission grant from the Diocese of Olympia (decision pending in March). The grant would support St. Mary's School for Girls, Diocese of Aweil, Episcopal Church of South Sudan, in partnership with Sudan Sunrise. Specifically, this grant would help to purchase essential furnishings for the girls' dormitories, including beds and mattresses. The dormitories were recently constructed in 2025, but projects such as furnishings remain unfunded and are needed to ensure completion by late spring of 2026.

Initially, St. Mary's School will serve up to 200 girls from South Sudan (Christians and animists) and from Darfur (Muslim) in a secondary education setting that includes room and board. The eventual enrollment of the school will be 500 girls, which will include two girls from each tribe in South Sudan. In addition to being the first secondary school for girls in Aweil, St. Mary's will also be the first school that seeks to build national reconciliation by bringing together girls from every tribe in South Sudan, and Darfuri-an Muslim girls as well.

Saint Mark's Cathedral Parish has been committed to global girls' education for several years, as an expression of our commitment to the UN Sustainable Development Goal (No. 4: Quality Education). This includes financial support for Sahar, an NGO which operated girls' schools in Afghanistan before the Taliban regained control; for St. Andrew's Arab Episcopal School and Princess Basma Rehabilitation Hospital and School in Ramallah and East Jerusalem; and now with St. Mary's School in South Sudan, serving Muslim and Christian girls in war-torn areas.

We are grateful to cathedral members who have shared their ministries outside our walls and are inviting others to join them – whether it is at River-ton Park UMC's legal clinic, St. James' Cathedral's English tutoring program, Advocates for Immigrants in Detention Northwest (AIDNW) in Tacoma, or the ongoing work of longtime local partner Casa Latina. We learn things in real time relationships with those directly affected that we might never learn watching the news.

In the words of one parishioner, "I've been working at RPUMC for about a year now and have been impressed by the fact that the people we help are uniformly kind, good people just trying to make a better life for themselves and their families. They have often made enormous efforts to come to the United States and just want the ability to live and work. I have often thought that if the world worked the way it should, we would, as a country, be paying these people to come here rather than doing everything we can to make their lives more difficult."

In our rapidly shifting political environment, it is difficult to feel like we are doing anything effectively for and with our migrant neighbors – much less loving them as ourselves. How

can we, in the words of the baptismal liturgy, "renounce the evil powers of this world which corrupt and destroy the creatures of God?" How can we, at the same time, provide refuge and sanctuary to those most in need of it? At its heart, sanctuary means prioritizing the safety of the vulnerable, listening to them and what they say they need, and letting their needs guide our response. That is what we have done alongside our ministry partners in the past year and will continue to do in the days, weeks, and years ahead. For updated information on our partners and various tools for advocacy and nonviolent resistance, see [www.saintmarks.org/justice/migrantjustice](http://www.saintmarks.org/justice/migrantjustice).

When asked "Who is my neighbor?" (Luke 10:25-37), Jesus shares a story about mercy and healing. In the parable, a Samaritan has compassion for someone who has suffered great violence and reaches across social, religious, and ethnic divisions to offer practical and meaningful help – and despite good reasons for mistrust, the person who has suffered accepts the help. In the process of practicing and receiving mercy, both find healing and live toward a better future. May we, in the words of Jesus, "go and do likewise." ♦

# Inspiration and Community: *The Saint Mark's Writers Group*

by Elizabeth Clark-Stern

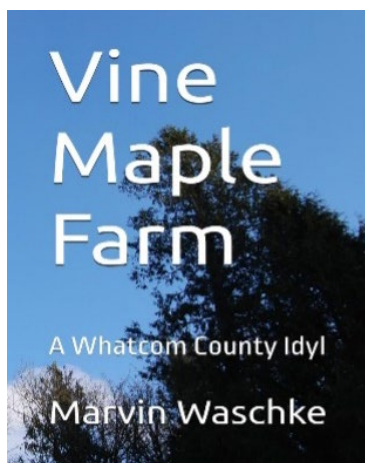
**P**AMELA BRADBURN, author of *The Visitation*, once asked me if I thought that writing comes from “somewhere else.” The psychologist in me said, “the unconscious mind, wellspring of dreams, and multiple expressions of creativity.” The Episcopal Christian in me said, “the Holy Spirit.”

Wherever it comes from, our writers have discovered the joy of reading their work aloud to our supportive, spiritual, good-humored group. Deborah Anderson, author of *Kneeling at the Cross* said that she has been in many critique groups, and this is the first one where she feels comfortable being “out,” as a Christian.

We proud Christians hold Zoom meetings on the 4th Tuesday of the month at 4:30 pm. In September 2024 we hosted an in-person Salon in Leffler House. It was Marvin Waschke's birthday. We sang, ate chocolate cake, and, in the tradition of Hemingway, Fitzgerald, and Dorothy Parker, sat in a circle and shared our work. Ninety-five-year-old Dick Carter read enthusiastically from his memoir *Oregon Born*, which went to press in January 2025. Dick can send a PDF to anyone who wants to read it. Contact him at [dickcarter29@outlook.com](mailto:dickcarter29@outlook.com).

Marvin Waschke's 2025 book, *Vine Maple Farm: A Whatcom County Idyl* is a gritty, enchanting memoir of generations on his family farm. He writes, “The homestead is

not just a few acres of land. It is the embodiment of a relationship between a plot of land, a layer of topsoil, and a family, which is nothing if not love and trust.” In 2025 Marv also published *Elementary Forms of Religious Life*, a collection of stories written with a touch of humor and dedicated to



Saint Mark's. The narratives reflect the transformations of American society and its private religions that began as we entered the 2020s. Both books are on Amazon.

Saint Mark's Associate Priest, Mary Petty Anderson, has written a memoir that I believe, when published, will be as powerful and life-changing as Sallie Crotty's *Out of the Ashes* (2022). In 2025, Sallie taught two interactive workshops for our Zoom Writers Group. Her unique method showed us how to write our own labyrinths, using our psyche instead of our feet. Sallie won the Woody Berlow Poetry Contest 2025 with this poem, “My father became a tree” published previously in *Emerge Magazine*:

*My father became a tree when his brain died*

*but his heart still fed his withering branches*

*as the wounds formed on his trunk  
in the bed I stood by each day*

*When I brought my baby to visit, she ran her fingers  
around the wounds and I imagined*

*her crawling snug in the cradle of his neck  
how the monitors would quiet and glow like fireflies*

*flickering around his limbs while  
his breaths became the wind singing Rock-a-bye baby*

John McLaughlin, author of the novel, *Run in the Fam'ly*, (Univ. of Tennessee Press, 2007) and a bilingual children's book, *The Good Stranger's Sanchocho Surprise* (Deletrea Press, 2020) is currently writing about living with chronic illness, as well as working on a memoir of his work in Latin America and a collection of poems.

*Sermons from an Island: Christian Mythology and the Liturgical Year* by Roger Sherman, went to press in December 2025. The Lectionary is a subjective, highly selective

lineup of stories that function like myths—and they are distinct from the literal record of the Bible. This selection of twelve sermons by Roger (who is Director of Liturgy and Music at Grace Episcopal Church on Lopez Island), provides imaginative interpretations of these myths in the context of the liturgical year. Roger writes, “Nobody hears more sermons than a church organist. This book interprets the Lectionary’s imaginative stories by encoding the symbolism partially through the lens of astrology or numerology. Using non-traditional elements can be more meaningful than literal interpretation.” It’s available through direct order by calling 1-360-376-4175, ext. 101.

Also offering a non-traditional perspective is Andrew Himes’ upcoming memoir, *Jesus, Mao, and Me*. He writes, “It explores the trap of ideological certainty, tracing a trajectory from the rigid precepts of Christian fundamentalism in my childhood to the equally extreme fundamentals of Maoism I adopted in my 20s. Is it possible to work for justice and build a life of compassion outside the boundaries of prescribed belief?”

I also offer new ways of seeing race, class, and choice, in my 2025 novel, *The House in the Ebony Tree*. (Third Place Books in Lake Forest Park, and Amazon.) Two little girls meet in Tupelo, Mississippi in 1955. Dorothy (“Dot Dot”) is African-American, Grace Ellen (“Winkie”) is white. Their love of imaginative play and ballet grounds their friendship in something far beyond the prejudice of race and class. One of their fathers builds them a house in the ebony tree in Winkie’s backyard. It becomes a sanctuary for their dreams and ideas, far away from the eyes of a judging world. As they grow up, they live in different cities, but faithfully keep in touch, and share the greatest joys and deepest tragedies of their lives. The decades move on, and as Winkie moves back to Tupelo after 60 years, can their love overcome the forces that threaten

to destroy their life-long friendship?

Returning to Pamela Bradburn’s original question: does writing come from “somewhere else?” Whether it is a poem, a garden, a new AI code, or innovative ways to face a difficult diagnosis, the creative and loving Holy Spirit burns brightly in us all. ♦



## BALANCE

BY JOSEPH ANDERSON

*A goose stands on one leg  
placid  
stable  
at ease*

*Why do I need to put both my feet under me?  
yin-yang male-female good-bad love-hate  
Isn't there really just the one thing needed?*

*How beautifully it cantilevers itself  
suspended in perfection  
a bridge over nothingness  
from nowhere to nowhere*

*At ease: the question has no answer  
the call no response  
the longing no reciprocation*

*None needed*

## DEEP IMPRESSIONS

BY DEBORAH ANDERSON

*I've often wondered  
What carving You there  
is like.  
Care must be taken  
to show the sinewy  
lingering exhaustion.  
Small muscles require  
deep cuts be rubbed smooth  
to show Your pain in persecution.  
Glistening oil softens  
legs bent towards  
nothing that brings relief  
Weeks and months spent  
shaping and smoothing  
the anguish of Your physical torture  
Loving hands that  
repeat for me  
the miracle of Your endurance  
I've often wondered  
what carving You there  
is like.*

# 2025 SAINT MARK'S CATHEDRAL DONORS

*Saint Mark's Cathedral extends heartfelt thanks to all those listed below who gave a gift in support of the cathedral's mission and ministries in 2025.*



▲ Gospel reading with Deacon Earl Grout and children; procession with Peter as crucifer; Easter Vigil proclamation

- |   |  |                                   |   |  |                                   |
|---|--|-----------------------------------|---|--|-----------------------------------|
| Anonymous (35)                              | Mary Ann Antley                        | Jane Beadel                       | Joshua Borichevski                          | Mary Beth Butler                                     | Mica Chavez                       |
| Melissa Aaron                               | Heidi Antonio & Alix Wandesforde-Smith | Nancy Beadie & Donald Argus       | Tracy Bos                                   | Terri Butler   | Tong Chen                         |
| Stephanie Abbott                            | Vince Aoki                             | Molly Beall                       | Molly Bosch                                 | Jennifer Butte-Dahl                                  | Joan Chen                         |
| Stephanie Abbott                            | Cindy Arasim                           | James Bean                        | Amy Bosch                                   | Evan Byrne   | Sarah Childers                    |
| Ashwin Abraham                              | Brynn Arborico                         | Maggie Beardsley                  | Joni Bosh & Worthington Smith               | Alice & Jim Cabe                                     | Mary Childs                       |
| Jon Achée                                   | Andy Arnold                            | Erin & Casey Beary Andersen       | Suzanne Bottelli                            | Rachel Cabral  | Coburn Childs & Luke Skinner      |
| Kathryn Actis-Grande                        | Mary Aronen                            | Brad Bebee                        | Samuel Boucher                              | Christopher Cabrall                                  | Maia Chin                         |
| Hafidha Acuay                               | Kathy Ashworth                         | Judi Beck                         | LaDonna S. Bowers                           | Casey Cagle  | Cathryn Chingren                  |
| Bill Adams & Amy Donohue-Adams              | Ashlyn Aske                            | Earl & Ann Beede                  | Mason Bowles                                | Molly Callison                                       | Cynthia Chirot                    |
| Mike & Katherine Adams                      | David Acheson                          | Tim Beggs                         | Janine Boyer                                | Margie Calvert                                       | The Chisholm Foundation           |
| Chloe Adams                                 | Marc Aubertin & Michael Kleinschmidt   | Isabella Beisel                   | Colleen M. Boyns                            | Margaretta & Joe Campagna                            | Thomas Choi                       |
| Cee Adamson                                 | Melanie Audette                        | Vladimir Bejdo II                 | Pamela G. Bradburn                          | Tom Campbell & Keith McCullough                      | Erin Chonko                       |
| Brad & Angelina Adcock                      | Amy Augustine                          | Roxana Bekemoham-madi             | Cherie & Hal Bradshaw                       | Russell C. Campbell                                  | Neil Chrisman & Carolyn Carlstrom |
| Cynthia Ademujohn                           | Barrie & Margaret Austin               | Steve Bell                        | Alyson Bradshaw                             | Elizabeth Campbell                                   | Nick Chrisman                     |
| Alyson Adler                                | Dan & Gail Austin                      | Elisabeth J. Bell                 | Mark Bradshaw                               | Haley Campbell                                       | Patrick Christell                 |
| Aerosound                                   | Kalee Aul                              | Amanda Bell                       | Carmen & Matt Brady                         | Amy Campbell   | Ken Christensen                   |
| Allan & Anne Affleck                        | Charles-Henri Avelange                 | Rachel Belle                      | Cheryl Braginsky                            | Amelia Canaday                                       | Erik Christensen                  |
| Trixie Angarayngay                          | Pam & Don Avriett                      | Jason Bendickson                  | Josh Brainard                               | Nicholas & Amelia Canaday Charitable Remainder Trust | Church of the Ascension, Seattle  |
| American Guild of Organists Seattle Chapter | Jennifer Babuca                        | Curt Bennett                      | George Brainerd & Maryellen Hancock         | John Cannon  | The Church Periodical Club        |
| Victor Aguiar                               | Ana Badell & Katherine Holmes          | Kip Bennyunes                     | Lecia Brannon                               | Capitol Hill Al-Anon Family Group                    | Micah Clark                       |
| Dawn Aiken                                  | Rebecca & Nick Bailey                  | Steve & Trisha Berard             | Bob Braun                                   | Gretchen & Adam Cappio                               | Elizabeth Clark-Stern             |
| Seyi Akanni                                 | Elizabeth Bailey                       | Clara Berg                        | Vee Braun                                   | Sandra & Kent Carlson                                | Sandra & Sterling Clarren         |
| Kathy Albert                                | Jo Ann Bailey                          | Al & Janet Berg                   | Mary Anne Braund & Steve Pellegrin          | Julia Cappio   | Carol Clayton                     |
| Vivienne Alcantara                          | Alex Baird                             | Julie Berger                      | Melissa Braxton                             | Sandra & Kent Carlson                                | Nancy Clemminshaw                 |
| Jorj Aldair                                 | Natalia Bajenova                       | Jean Berry                        | Julie Braybrooks & Greg Simon               | Jessica Carlson & Austin LeSure                      | Ivaly Cline-Welch                 |
| Glenda Aldana                               | Rachel Baker                           | Jan Bersin                        | Gianna Brelsford & Robert Herr              | Robert Herr  | Mason Clugston                    |
| Jerene Aldinger                             | The Baker Family                       | Jane E. Bertolin                  | Christopher Breunig                         | The Rev. Shane Carlson                               | Amanda Coba                       |
| Blake Alex                                  | Camilla Baker                          | Susan Betcher                     | Kelly Brewer                                | Sharlene Carmody                                     | Lynne A. Cobb                     |
| Michael & Marjorie Alhadeff                 | Shelley Baker                          | Betcher Family Foundation         | Jenna Brewington                            | Luz Carnes   | Elora Coble                       |
| Margaret Alison                             | Sarah Bakker                           | Bourke & Miriam Betz              | George Brewster & Melissa Wood Brewster     | Amanda Carnes  | Anna & David Coble                |
| Kay Allen                                   | Christi Ball Nichols                   | David Betz-Zall                   | Elizabeth Brinkley                          | Colton M. Carothers                                  | Craig Cochrane                    |
| Georgie Allen                               | Martin Balogh                          | Berta Beveridge                   | Wendy J. Carpine                            | Libby Kelleher Carr                                  | Cassie Cohen                      |
| Christine Allen                             | Marcos Banchik                         | Morgan Bevin                      | Elizabeth Brinkley                          | Eric Carr  | Maria & Charles Coldwell          |
| Karen Maeda Allman & Elizabeth Wales        | Amy Baranski                           | Joel Bevington & Seth Tucker      | Broadview Community United Church of Christ | Amelia Carroll                                       | Nancy Coleman                     |
| Kerry & Janet Allman                        | Karen Bargelt                          | Nancy Beyer Cannon                | Coley Brogan                                | Rhea & Clark Coler                                   | Rhea & Clark Coler                |
| Nick Almerico                               | JohnPaul Baric                         | Doug Bierer                       | Deborah Brown                               | Jane & Dick Carter                                   | Marya Colignon                    |
| Chap & Eve Alvord                           | Connie Baring-Gould                    | Hannah Binder                     | Claire Brown                                | Robert & Lauren Carter                               | Maggie Collinge                   |
| JoAn Andenes                                | Theresa Barker                         | Seth Birnbaum                     | Rachel Brown                                | Ginger Carter  | Marcela Colmenares                |
| Karen Andersen & V Woolston                 | Jean Barker                            | Aya Bisbee                        | Lindsey Brown                               | Cameron Carter                                       | Nicholas Coniaris                 |
| Stacy Andersen & Lyle Bicknell              | Wensley Barker                         | The Ven. David Bishop             | Sarah Brown                                 | Amelia Casciola                                      | Fran & Gerry Conley               |
| Kenneth Andersen                            | Donna E. Barnes                        | Sally Bjornsen                    | Carl & Mary Brown                           | John Casseday  | The Rev. Adam Conley              |
| The Rev. Deborah H. Anderson                | Ian & Laura Barnes                     | Heather Black                     | Katie Browne                                | Ethan Cassel-Mace                                    | Yen Thai Connolly                 |
| The Rev. Mary Petty Anderson                | Richard Barnes                         | Ben Black                         | Brenna Bruce                                | Ace Cassidy  | Sarah Conover & Douglas Robnett   |
| Patricia Anderson                           | Harvey Barnes                          | Chad Blanchard & Kathy Coggins    | Melissa Bryan                               | Toni Castro  | Jacqueline Conrad                 |
| Dan Anderson & Montana Contreras            | Alexander & Barrett Barnett            | Eric & Dana Blazevic              | The Rev. Shelley Bryan Wee                  | Dorianne Caswell                                     | LeAnne Conway                     |
| Marion Anderson                             | Jake Barokas                           | Dena Blevins                      | Jonathan Bryant                             | The Cathedral Foundation of the Diocese of Olympia   | Claire Conway                     |
| The Rev. Dr. Carey Anderson                 | Tim & Tony Barrick                     | Lena Blissell                     | Jiho Bryson                                 | Sarah Cave & Maggie Jensen                           | Gretchen Lynn Cook                |
| Katy Anderson                               | Lorraine Barrick                       | Gregory Bloch                     | Nabeel Buha                                 | Jeffrey Cave   | Andrew Cooley                     |
| Allen Anderson                              | Wendy Claire Barrie & Phil Fox Rose    | Sherilyn & Paul Bloch             | Alyssa Buller                               | Julianne Cederberg                                   | Denise Cooley                     |
| Geoffrey & Amy Anderson                     | Roy Barsness                           | Shannon Blood                     | Angela Bultemeier                           | Kelly Cercy  | Julia Cooper                      |
| Shelley Anderson                            | Mary Clare Barth                       | Victor Bloomfield & Jennifer Skuk | John Bunch & Claire Simon                   | Shelly Chabak  | Hana Cooper                       |
| Jason Anderson                              | Peter Bartholomaus                     | Karin Bloomquist                  | Laurie Burdick & Carolyn Woodward           | Susanah Chace  | Oona Copperhill                   |
| Maxwell Anderson                            | Timothy Bartholomaus                   | Carolyn F. Blount                 | Susanah Chace                               | Sherman Chace  | Patrick Corcoran                  |
| Tim & Susan Anderson                        | Alexis Basista                         | Indigo Blue                       | Prachi Chachondia                           | Karen Ann Chalupnik                                  | Ian Corey-Boulet                  |
| Vanessa Anderson                            | Audrey Bass                            | Chip Blundell                     | Michael Boeckh                              | Tina Chamberlain                                     | Barbara Cornell                   |
| Judy Andrews & Doug Thorpe                  | Carol Batchelder                       | Maryann Bodnar                    | Robert Boehlke & Jason Naki                 | Erika Chang  | Michael Correa                    |
| The Rev. Dianne Andrews                     | Thomas Bauer                           | David Boeckh & Nick Stevens       | Alex Bogdanowicz                            | Bonny Chang  | Bob Corwin                        |
| Emily & Marc Antezana                       | Anna Bauer                             | Michael Boeckh                    | Gerry Boler                                 | Phil Burwell & Pamela Bartlett                       | Julie E. Coryell                  |
| Elizabeth & Angus Antley                    | Amanda Baughan                         | Robert Boehlke & Jason Naki       | Carl Bolstad & Beatrix Wiedmer              | Fay L. Chapman                                       | The Rev. Liz Costello             |
|   | Tallulah Baumgart                      | Alex Bogdanowicz                  | Tai Bonfiglio                               | The Rev. Canon Cristi Chapman                        | Christina Cote                    |
|   | Layne & Ricardo Bautista               | Carolyn F. Blount                 | Mel & Mary Butler                           | Chris Chaves   | Isaac Cote                        |
|   | Jade & Morgan Bawcom-Randall           | Indigo Blue                       | Richard & Catherine Butler                  |  | Matthew Cottingham & Kelly McAvoy |
|   | Mary Bayne                             | Chip Blundell                     |   |  | Michel Marty Couret               |
|   | William & Elizabeth Bayne              | Maryann Bodnar                    |   |  | Gretchen Covey                    |
|   | Sam Beadel                             | David Boeckh & Nick Stevens       |   |  | Logan Craft                       |

Martha Craig	Diocese of Olympia	Gladys Ezeokeke	Annabelle Gagnon	Thomas & June Grant	Sarah Harrison	Horton	Bow Jones
Emily Craig	Jennifer Divine	Mo Fain	Pav Gajkowski	Marsha Graves-Smith	Brent Harrison	The Rev. Josh & Christy Hosler	Nancy Jones
Jeanne Creason	Jennifer Dixon	James & Deanne Falzone	Diana Gale	Pam Gray & Ross Hays	Richard Hartung	Elli Howard	Gabe Jones
Sally Cressler	Maria T. Do	Andrew Fandel	James Gale & Virginia McDermott	Betsy Gray	Ryleigh Hartung	Maxwell Huang-Hobbs	Laurie Jones
The Rev. Stephen Crippen	Vinh Do	Emily Fang	Donald Gallagher	Erika & Blake Grayson	Jules Hartwig	Brenda Harwood	Genevieve Jones
Ray Crisologo	Gary & Carrie Dodbora	Jorge Farias	Philip Gallo	Nan Grayston	Bernedette Haskins	Adrienne Hubbard	Erica Jones
Katherine Crosier	Victoria Dodson	Reid Farnsworth	Robert Galvin	Audrey Greaves	Ashley Haugen	Deborah Hubenthal	Helen Jones
Dana Cross	Suzanne Dolberg	Aidan Farr	Laura Gamache	Carol Green	Kathrine Hauser	Tia Hudson	Steve Jones
Sallie & Mark Crotty	Rhoda Donkin	David Farrell	Michelle Gantz	Vicky Greenbaum	Jim & Jane Hawkanson	Joe Huether	Kendall Jones
Christopher & Jilinda Crowley	Harley & Christy Donner	Chloe Farrell	Peter Garbes & Heather MacLaughlin Garbes	The Rev. Canon Emily Griffin	Katrina & Robert Hawking	Charles Huff	Molly Jones Gray
Rachel Crowley	Jenny & Erik Donner	Ann Fasano	Brenda Garcia	Anne H. Griggs	Ken & Mary Hawkins	Emily & Jason Huff	Kathleen Jorgenson
Jane Culliton	Lauren Doran	Joe Fecarotta	Juan Gardner	Mariah Grimwood	Elizabeth Hawksley	Laurie Hugdahl	Jang & Graham Jang
Sharon L. Cumberland & James T. Jones	Nicole Doran-Marshall	Casey Fee	Amy Gardner	Mary Groeninger	William Hawley	Becky Hughes	Addison & Brynn Josey
Linda Cumberland	Nate Dowling	Tammie Fehn & Brian Kennedy	Gail Gardner & David Lawson	Joel & Rachel Gronsky	Sue Hayden Brown	Andy & Tracy Hughes	Joshua Green Foundation
Bryony Cummings	Marcus Doyle	Ken Feldman	Lulu Gargiulo & David Wild	Michael Garrett	Micah Hayes	Scott Hulet	Caroline & Josh Judd-Herzfeldt
Keith Curl-Deve	Anlan Du	Kathy Feldman	John Garfield	Amy Garrett	William Hayes	Nathaniel Hull	Carol Judge & Richard Wyckoff
Barbara Curran-Steiner	Krista Dubin	Marty Feldman	Sherry Garman	Josie Garza	The Rev. Robert & Sally Hayman	Meredith Hullar	Mary Jussel
Amy & Chris Curtis	Phyllis Duin	Stone Fennell	Lillian Garmany-Williams	Emily Gatch	Francesca Hays	Hume Family Foundation	Rebecca A. Kacel
Anna Curtis	Amanda Duke	Catherine Fenner	The Rev. Steve Garratt & Margaret Niles	Kelly Gates	Mia Hays	John & Elena Hunt	Carrie Kahler
Charlie Curtis & Jane Harvey	Mike Dulien	Sharon Ferguson	Michael Garrett	Alice Gautsch Foreman	Tom & Margie Hayton	Alex Hunt	Ariana Kaiser
Kelsey D.	Annabell Dumez Matheson	Sarah Fick	Amy Garrett	Neil & Sonjia Gavin	Rose Hazard	Stuart Hunt	James Kalfas
Loy & Michael Dahl	S. Wayne Duncan	Nicholas & Marcia Fidis	Josie Garza	Mike & Charlotte Gavin	Elizabeth Hearing	Vanessa Hunt	Daisie Kallop
David Dahl	Anne Duncan	Barbara & Tim Fielden	Emily Gatch	Svetlana Gedymin	Elizabeth Hearing	William & Ruth Hurt	Caroline Kanaga
Kristen Daley Mosier	Lawrence Duncan	Brianna Figy	Kelly Gates	Igor Gedymin	Rachel Heath, Tyler McCormick, and Esme & Merilee Heath McCormick	Arden Hutchison	Adrian Kane-Galbraith
Maggie Dalzell	Angela Dunn	Scott Fikse & Marcus Thompson	Alice Gautsch Foreman	Allison Geeslin	Ashley Hedeem	Kevin Hyder	Pete Kangas & Anna Gordon
Elaine Dame	Sam Dunnington	Russ & Jackie Filbey	Neil & Sonjia Gavin	Amber Geiger	Betsy Heimburger	Min Hyuck Kim	Roberta F. Kanive
Melissa Damschroder	Andy & Jillon Dupree	Joseph Filbrun	Mike & Charlotte Gavin	Guy & Pam Generaux	Gregory B. Helfrich	Elizabeth Ingles	Emma Kaplan
Tu Dang	Kathleen Durham	Brynnan Fink	Timothy Finneron	Catherine George	Sam Helms	Ed & Molly Henderson	Ruchi Kapoor
Laurie & William Daniel	Jennifer Durrie	Timothy Finneron	Peter Fiske	Nancy J. George	Ed & Molly Henderson	Phillip & Eda Lee Haas	Nicole Karl
Casie Danielson	Susan & George Durrie	Igor Gedymin	Greg & Mary Fitzgerald	Kathy Gerlich	Nan & William Henderson	Haas	Claire Kasinadhuni
Elizabeth Danz	Brianna Dusseault	Allison Geeslin	Angelika Dzema	Shahruz Ghaemi	John Hendricks	Ed & Ellen Henderson	Carole Kassir-Garcia
Diana Danzberger & Jeff Bowers	Jon Dyer	Amber Geiger	Gary Eanes	Mary Ann Ghosn	Susanna Henke	Devon Isner	Jon Kastl & Mark Harbick
Hue Dao	Jon Dyer	Guy & Pam Generaux	Katie Earles	Bill & Roxy Giddings	Lester Hailey & Ellen Hopkins	Thomas Iurino & Elizabeth Lunney	Naomi & Masashi Kato
The Rev. Jennifer & Will Daugherty	Deb Easter	Catherine George	Deb Easter	Kurt Giessel	Leah Hair	Jacque Ives	Hannah Katz
Alan J. Davidson	Tabi & Brent Eberhardt	Nancy J. George	Tabi & Brent Eberhardt	Henry Gifford	Kate Elizabeth Halamary	Robert J.	Michael & Priscilla Kaufmann
Paneen Gordon Davidson	J. Eckard	Kathy Gerlich	J. Eckard	John A. Gilbert	Estate of B. & J.M. Haldane	Stephen Henry	Edie Kausch
James Davidson & John Gulhaugen	Stephen Eddy	Shahruz Ghaemi	Stephen Eddy	Richard & Liz Gilbert	Anita Hale	Theo Henry	Miyon Kautz
Russ Davies & Donna Martin	Sarah Edwards	Mary Ann Ghosn	Sarah Edwards	Susan Gilbert	Esther B. & J.M. Haldane	Tammy Herdener	Linda & Eric Jackman
Carrie B. Davis	Kailee Eckhoudt	Bill & Roxy Giddings	Kailee Eckhoudt	Brittany Gilbertson	Georgia Herdener	Georgia Herdener	June Jackson
Amanda Davis	Amy Egglar	Kurt Giessel	Jan Eisenman	Susan Gildersleeve	Elyana Hernandez	N. Rebecca & Lynn Noordam	Elizabeth Jacob-Files
Darrin Davis	Jan Eisenman	Henry Gifford	Sarah Eisert & Charles Gagnon	Brian Gillespie	Sus Herring & Lynn Noordam	Alice Herz	The Rev. Rick & Satya Jaech
Miller Davis	Sarah Eisert & Charles Gagnon	John A. Gilbert	Izzy Flowers	Mallory Gillin	Esther Herzog	Hayden Higgins	Onna Jaeger
Ryan Davis	Kristine Ekman	Richard & Liz Gilbert	Melinda Flores	Danne & Ed Gilmore	Hayden Higgins	Ruth & Greg Hilborn	Claire Jaja
Jeffery Davolt	Amanda Focht	Susan Gilbert	Izzy Flowers	Marcia Gilmore	Stephen Henry	Mako Hill	Beth Jakubowski
Patricia A. de la Fuente	Ernestine Flemister	Brittany Gilbertson	Kailee Eckhoudt	Rebekah Gilmore & Tyler & Esther Morse	Theo Henry	The Rev. Canon Ivar Hillesland	Pat & Don Janssen
Mark & Ellen De Rocco	Ernestine Flemister	Susan Gildersleeve	Jan Eisenman	Eva Ginnell	Georgia Herdener	David Hallowell	Leslee Jaquette
Beth De Sort	Kristine Ekman	Brian Gillespie	Sarah Eisert & Charles Gagnon	Gemma Giovale	Elyana Hernandez	William Halsey	David Jenkins
The Rev. Susan Dean	Mary Ann & Richard Ekman	Mallory Gillin	Sarah Eisert & Charles Gagnon	Gary Glant	N. Rebecca & Lynn Noordam	Darlene Halverson	Robert C. Jenkins
Rob & Chloe Deane	The Rev. Paul Eldred	Danne & Ed Gilmore	Sarah Eisert & Charles Gagnon	Michael Glenn	Alice Herz	David Halverson	Adam Jenkins
Scott Deasy	Kathleen Elkins	Marcia Gilmore	Sarah Eisert & Charles Gagnon	Gary Glant	Esther Herzog	Jen Hamilton	Robert Hirshon
Mark Dedomenico	Adrienne Elliott	Rebekah Gilmore & Tyler & Esther Morse	Sarah Eisert & Charles Gagnon	Michael Glenn	Hayden Higgins	Carole Hamlin	Nathan Ho
Josh Del Pino	Gerald Elliott	Eva Ginnell	Sarah Eisert & Charles Gagnon	Gemma Giovale	Ruth & Greg Hilborn	Greg Hamm & Beatrix Roemheld-Hamm	Jeremy & Michelle Hobbs
Kevin Delahunty	Marion A. Ellis	Gemma Giovale	Sarah Eisert & Charles Gagnon	Gary Glant	Mako Hill	Hannah & Michael Hochkeppel	Alexandra Jesse
Emily Delaney	Liam Ellul	Gary Glant	Sarah Eisert & Charles Gagnon	Michael Glenn	The Rev. Canon Ivar Hillesland	Richard Hodsdon	Angelina Jimenez
Sherril DelBene	Gabriela Elwell	Victoria Glore	Sarah Eisert & Charles Gagnon	Medina Glenn	David Hallowell	Lisa Hammond	Maxine Joers
Joanne DelBene	Sarah A. Elwood-Faustino	Jillian & Jon Goddard	Sarah Eisert & Charles Gagnon	Vicki Glover	William Halsey	Linda Hoedemaker	Sandy Johanson
Jacob Dennis	Tatyana Emery	The Rev. JD Godwin & David Stinson	Sarah Eisert & Charles Gagnon	Jillian & Jon Goddard	Darlene Halverson	Marie Hoeger	Gerry Johnson & Linda Larson
Vasco dePinna	Casey Engler	Mark Harding	Sarah Eisert & Charles Gagnon	The Rev. JD Godwin & David Stinson	David Halverson	Erin Hoener	Lana Johnson
Miriam Dering	Rebecca S. Engrav & Joon-Ho Yu	Van Hardison & Thomas Bradford	Sarah Eisert & Charles Gagnon	Angela Goldberg	Jen Hamilton	Carol & John Hoerster	Kay Johnson & Joe Zunt
Eva Derksen	Mary Ensley	Elizabeth Hardisty	Sarah Eisert & Charles Gagnon	Jen Goldsmith	Carole Hamlin	Sophia Hoffman	Kevin C. Johnson
Annie Dern	Shelton Ensley	Jamie Hare	Sarah Eisert & Charles Gagnon	Sara Joy Gollings	Greg Hamm & Beatrix Roemheld-Hamm	Kay Hofmeister	Karen Johnson
Jennifer DeRosa	Lisa Erdely	Kim & John Harlow	Sarah Eisert & Charles Gagnon	Maria Gomez	Hannah & Michael Hochkeppel	Melissa & Ben Hogan	Susan Johnson
Ashley DeRuyter	Barbara & Steve Erickson	John Harmeling	Sarah Eisert & Charles Gagnon	Gabriel Gomez	Robert C. Jenkins	H. Lee Holcomb	Carrie Johnson
Robert Devine	Andrew Erickson	David Harms	Sarah Eisert & Charles Gagnon	Robert Goode	Darlene Halverson	Andrew & Keri Hollenbeck	Amanda Johnson
Ellen Devlin	Katrina Ernst	Michael Harrell	Sarah Eisert & Charles Gagnon	Alicia Goodwin	David Halverson	Lori Holloway	Paige Johnson
Kate & Matt Dewey	The Reverends Jack Erskine & Christy Close Erskine	Sheila Harrington & Brendan Boyle	Sarah Eisert & Charles Gagnon	Georgy Gorelko	Jen Hamilton	Marcia & Paul Holt	Dana Johnson
Rachel Dexter	Margaret & David Escobar	Norm & Tovi Harris	Sarah Eisert & Charles Gagnon	Bill & Kihwa Gosline	Carole Hamlin	Helen Holter	Danielle Johnson
Robin Dexter-Meyer	Don & Polly Essinger	Mina Harris	Sarah Eisert & Charles Gagnon	Marilyn Grady	Greg Hamm & Beatrix Roemheld-Hamm	Pat Honeysuckle	Hannah Johnson
Mary E. Dickinson	Dan & Nancy Esterly	Arlen Harris	Sarah Eisert & Charles Gagnon	Tracey Grady	Greg Hamm & Beatrix Roemheld-Hamm	Sandra Hopfengardner Warren	Barbara Johnstone
Kemper Diehl & Hanna McLaughlin	Melanie Estes	Tana Harris	Sarah Eisert & Charles Gagnon	Dawn Grady	Hannah & Michael Hochkeppel	The Rev. Canon Elise Johnstone	The Rev. Canon Elise Johnstone
Ken Diest & Merrielle Spain	Robin Ethridge	Shannon Harris	Sarah Eisert & Charles Gagnon	Fuzzywallz Mastering	Richard Hodsdon	Meghan Jones	Wes Klingele
	Daniel Evanko	Connor Harrison	Sarah Eisert & Charles Gagnon	Veda G.	Linda Hoedemaker	Julie Jones	Amy Klosterman
	Allyson Evans	Elaine Harrison	Sarah Eisert & Charles Gagnon	Lynn Gabrieli	Marie Hoeger	Courtney Jones	Melinda F. Kmita
	Ken Diest & Merrielle Spain		Sarah Eisert & Charles Gagnon	Gaurav Gada	Erin Hoener		Re Knack & Brian Cole
	Kirsten Evenson		Sarah Eisert & Charles Gagnon		Erin Hoener		



▲ Silent Night by candlelight on Christmas Eve; thanksgiving over the water; Baptism; Vestry candidates; Cathedral with PRIDE flag.

Wally & Becky Knack  
 Jesse Knapp  
 Zechariah Knepper  
 Bob & Linda Knickerbocker  
 Susan Knirk  
 Windley Knowlton  
 Brandon Knox  
 Stephanie Ko  
 Mary Koch  
 Allan & Mary Kollar  
 Michael Kolor  
 Nancy Kool  
 Karla Koon  
 Dave Koon & Sylvia Reyes-Koon  
 David & Jessica Koppy  
 Michael Kosko  
 Scott Kovacs  
 Kelly Kozdras  
 Amity & Paul Kramer  
 Miranda Krause  
 Susan Kreml  
 Susie Kretzschmar  
 Kade Krichko  
 Bryan Krislock  
 Leigh Krog  
 Mimi Krsak  
 Ryan Kuhar  
 Christian Kuhr  
 Mark Kuiper & Kristen Austin  
 Sonja Kuiper  
 Josh Kuiper  
 Rohan Kumar  
 Karl & Catherine Kunkel  
 Riya Kuo  
 Jake Kurlander  
 Ann & Jussi Kurronen  
 Lisa Kwiatkowski  
 Jan & Judy Kyle  
 The Rt. Rev. Philip & Dr. Melissa LaBelle  
 Lisa Labossiere  
 Kathy Lachata-Oakley  
 Rabi Lahiri  
 Meghan Laible  
 Zeus Lames  
 James Lampert  
 The Lamperti Family  
 Ruth Landes  
 Scott D. Landry  
 Mariko Langan  
 Dale Largent  
 Andrew Larsen  
 Christina Larsen  
 Barbara Larson  
 Kris Larson  
 Kayla Laughlin  
 Brian Lavery  
 Dr. Edith Lawrence  
 Billie Lay  
 The Rev. Alison Leary  
 The Rev. Paul Lebens-Englund  
 Jim LeClair  
 Janet Leduc  
 Arthur Lee & Keri Adams-Lee  
 Margaret Lee  
 Jean Leed  
 Christy Lee-Engel  
 Mindy Lefler  
 Matthew Leggett  
 Martha Leigh & Joe Brady  
 David & Linda Leisy  
 Ronnie Leith  
 Virginia & Brian Lenker  
 Gene Leonardson  
 Nico Leonis  
 Anna Levenberg  
 Brittany Levenson

Ron & Peggy Levin  
 Patricia Lewis  
 Bill Leyrer  
 Ashley Li  
 Keyuan Li  
 Jackie Liao  
 Emily Licastro  
 Cindy Liddle  
 Michael Light  
 Amanda Lila  
 The Rev. Mary Lindberg  
 Curtis Linderman  
 Georgia Lindquist & Peter Aberg  
 Carla Lindquist  
 Elinor O. Lindquist  
 Abby Lindsay  
 Lex Lindsey & Lynn Manley  
 Lars Lindvig  
 Paxton Ling  
 Jennifer Liszcz  
 Jura M. Litchfield  
 Mona Liu  
 Denisse Llanes Caro  
 Phil & Karen Lloyd  
 Laura Loe  
 Page Loeb  
 Heather Loebe  
 Charles Loeffler  
 Julia Logan  
 Anne Lohrmann  
 Susan Longfellow  
 Margaret & Tom Lopez  
 Maribeth Lopit  
 Carina Lora  
 Robert Losey & Beverly Brown Losey  
 Carson Lott  
 Alina Lou  
 Michael & Diana Louden  
 McKinley Lovett  
 Sonja Lowe  
 Bia Lowe  
 Chris Lowe  
 Paul Lowe  
 Molly Lubetkin  
 Margaret M. Lucas  
 Amity Ludders  
 Lance & Amy Ludman  
 Sue Lukins  
 Derek & Laura Lunde  
 Sienna Lundeen  
 Kelly & Mark Lundquist  
 Karen Luoma-Varichak  
 Annie Luopa  
 Patrick Lynch  
 Elizabeth Lynch  
 Angela Lynn  
 Lilith Lysistrata & Heidi Jindrich  
 Sandra M.  
 Nat M.  
 Mary Lou Macala  
 Dave MacBride  
 Phyllis MacCameron  
 Carleton MacDonald & Karen Thomas  
 Joyce Macek  
 Shelley Mackaman  
 Mary Ann Mackie  
 Cinda B. Madonna  
 Anna Magdalena  
 Mark Magee  
 James Malatak & Rick Sturgill  
 Greg Malone & Mary Jayne Allen  
 Devin Malone  
 Anne Maloney

Emily Mandaville  
 Rehana Manejwala  
 Hariprasad Mangalagiri Parthasarathy  
 Will & Jean Manis  
 Sarah Manley  
 Sarah Mantey  
 Angelica Manuel  
 Marjorie Manwaring  
 Charlie Manzaneres & Sharalyn Bechtel  
 René A. Marceau  
 Michelle Marchant & Dan Hall  
 Linda Marcuse  
 Karen Marcusen  
 Colleen Marie  
 Theresa Marinelli  
 The Rev. Lynne S. Markova  
 Heidi Marsh  
 Cheryl & Mark Marshall  
 Barb & Doug Marshall  
 The Rev. David & Alice Marshall  
 Frank Martin  
 Lisa Martin  
 Sandra Martin  
 Diane Martin  
 Jacob Martin  
 Rosa Martinez  
 Camille Marvin  
 Clarissa Marzan  
 Susan Mashkek  
 Raz Mason  
 Maliha Masood  
 Eddy & Christopher Matlock-Mahon  
 Joel Matter  
 Elizabeth Matzen  
 Elizabeth Maupin  
 Cait Mauter  
 Arnie & Kathy Mayer  
 Curry Mayer  
 Hilary Mayhan  
 Michael & Rosemary Mayo  
 Thomas Mayo  
 Justin Mayo  
 Audrey Mays  
 Schuyler McAuliffe  
 Kay McCall  
 Stanley & Janet McCammon  
 Thomas McCann  
 Teresa McCann  
 Patrick McCanna  
 Dylan McCarrroll  
 Joseph & Pamela McCarthy  
 Kathie McCarthy  
 Jennifer McCarthy  
 Ann McCartney  
 Melissa McCarty  
 Kiralee McCauley  
 Anna McCleeny  
 Sarah McCord  
 Kelly McCoy  
 Jill & Philip McCune  
 Kathy McDonald  
 The Rev. Dr. Maria McDowell & Elizabeth Schroeder  
 Pearl McElheran  
 El McFarland  
 The Rev. Dorian McGlannan  
 Jenny McGovern  
 Patty McGrath  
 Joie McGrath  
 Fred & Heidi McLlroy  
 Jamie McInerny  
 Lisa McIvor  
 Mark & Nancy McKallor

Morgan McKibbin  
 Harper McKinney  
 Gayle McKool  
 Bob McLauchlan  
 John McLaughlin  
 Alyssa McLeod  
 Mark McMillen  
 Rose McMurray  
 Doug & Cecelia McNair  
 Donna McNamara  
 Renata McNeely  
 Michael & George McNutt  
 The Rev. Christopher & Amanda McPeak  
 Jordan McPhee  
 Sarah McQuaide  
 Ruth McRee Schultz  
 Bill & Colleen Meacham  
 Leslie Meadowcroft  
 Eliana Medina  
 Madisen Medley  
 Emily & Stuart Meeks  
 Liz Mena  
 Breona Mendoza  
 Paul Brekke Held Menth  
 Dave Menz  
 Dale Merriam  
 John Mertens  
 Dawn Merydith  
 Zach Meves  
 Estephen Meza  
 Frances H. Migliaccio  
 Marilyn Milberger  
 Heather Millar  
 Janet Miller  
 Stu Miller  
 The Rev. Mark Miller & Julie Garner  
 Linda Miller  
 Ray Miller  
 Jacquelyn & Gordon Miller  
 Craig Miller  
 Anna Miller  
 Laurie Miller  
 Meg Milligan  
 Madelyn Milligan  
 Justin & Nicolette Mills  
 Jane Mills  
 Chloe Qiuyi Mills  
 Belinda Minick  
 Katherine Minsch  
 Sydney Mintle  
 Gary Minugh  
 Marilyn Miquel  
 Nicole & Rishi Mirchandani  
 Emily & Paul Misleh  
 Lizzy & Matt Mitchell  
 Leslie Mitchell  
 Paul Mobilio  
 Allison Mobley  
 Tamara Moellenberg  
 Steve Paul Moen  
 Heather & Scott Moffat  
 Jens Molbak  
 Jo Monahan  
 Natalia Montes  
 W. Jacob & The Rev. Kelly Ramer Moody  
 Alison Moon  
 James Moon  
 Jacob Moore  
 Vicki Moore  
 Eric Moore  
 Derek Moretz  
 Larissa Morgan  
 Bill Morgan  
 Laila Morgan

Victor Rova Morgan  
 Margaret & William Mori  
 Katie Moriarty  
 Kaili Morikawa  
 Jeremy Morris  
 Ann Mosbacher  
 Lucas Mosca  
 Alvin Moseberry  
 The Moss Family  
 Isabel Mouton  
 Diane Mowrey  
 Madeline Moxley & Andronicus Marati  
 Elisabeth Mueller  
 Cole Mueht  
 Laura Ellen & Robert Muglia  
 Travis & Rebecca Muld  
 The Rev. Meghan Mullarkey  
 Mary Bahnsen Mullen  
 Mary Mullen  
 Ruth Mulligan  
 Nancy Mullins  
 Ruth Munger  
 Mr. Michael Murphree  
 Sean R. Murphy  
 Ashley Murphy  
 Jim & Pam Murray  
 Carla Murray  
 William Murray  
 Katherine Mustelier  
 Tracy Mwangoti  
 Carl & Jean Myers  
 Melissa Myers  
 Sarah Myhre & Zac Reynolds  
 Arman Naderi  
 Tanya Nadkarni  
 Colin & Anahi Narver  
 Kari E. Nasby  
 National Association of Letter Carriers Branch 79  
 Wilma Neal  
 Elaina Neal  
 John Neitzel  
 Sandy Nelson & Christopher Brown  
 Janet Nelson  
 John & Laurel Nesholm  
 Estate of Roberta A. Nestaas  
 Katie Neuser Khan  
 Daniel Nguyen  
 Melissa Nibungco & Ana Eufemio  
 Dan Nielubowicz & Hailey Lamb-Nielubowicz  
 Erin Nieman  
 David Nienhuis & Teresa Osborn  
 Joseph Nieves  
 Brian Nisonger  
 The Rev. Peter B. Nissen  
 Dan Niven & Elizabeth Mahoney-Niven  
 Molly Nixon  
 Jerynne Noble  
 Sakura Noda  
 Dylan Noe  
 Nathan Noel  
 Francina Noordhoek  
 Jeannie Nordstrom  
 Elizabeth Norgren  
 The Rev. Fred & Julie Northup  
 Rebecca Norton  
 Kathleen Nyhuis  
 Victoria Oak  
 Todd Oberg

Kara Oberstadt  
 Adam Oberstadt-Petrik  
 Catherine O'Brien  
 Lyn O'Doran  
 Lynn Offutt & Melissa Davis  
 Jasper Tran O'Leary  
 Peggy & Randy Olin  
 Dan Oliphant  
 Maris Olsen  
 Courtney & Craig Olson  
 Krista Olson  
 Craig & Rose Olson  
 Barbara Olson  
 Ori O'Neill  
 Kathryn O'Neill  
 Winifred Ong & Michael Williams  
 Susan & Rohan Oommen  
 Mario Orallo  
 Ariel Ortega  
 Lily Orth-Smith  
 Neah Ortman  
 Norva Osborn  
 Laura Ospina  
 Pam & Tim O'Sullivan  
 Laura Otanez  
 Stephanie Otis  
 Andrew Otwell  
 Chris Overholt & Laurel Waters  
 Jessi Overton  
 Christian Owen  
 Olga Owens  
 The Rev. Lisa Ozaeta  
 Stephanie Page  
 Fay H. Page  
 Kim Painter  
 Brett Palso  
 Emma Palumbo  
 Matt Pampena  
 Mary Pandiani  
 Bryan Pansing & Sebastian Tong  
 Adrienne Papermaster  
 William Park  
 Larry & Lynn Parker  
 Emma Parks  
 Monica Parks  
 Beverly Parsons  
 Sinikka Parviz  
 Barbara Pastores  
 Sandra Pastorius  
 Gabrielle Pate  
 Dharti Patel  
 Sean Patrick  
 Kirk Paxson  
 Andrew Payne  
 Susan M. Payne  
 Marshall Peabody  
 Nancy Pearson & Roland Yancey  
 The Rev. Kevin Pearson  
 Lisa Pearson  
 Erin Pearson  
 Hue Pedersen  
 Alice Pedersen  
 Anita Peebles  
 Beverly Pegues  
 Anthony & Marian Peiffer  
 Felix Pekar  
 Maria Peletskaya & Mathew Davies  
 Alex Pena  
 Ken & Jan Pendergrass  
 Jan Penrod  
 Michael Perera & Hilary McLeland-Wieser  
 Evan Perlo  
 Deborah Person

Paula & Ron Pessner	Malcolm & Gwen Reider	Pat & Virginia Sainsbury	Serenna Shock	Tiffany Stetson	Francesca Terry	Robert & Anne Van Cleve	Western
Karen Petersen	Kate Reingold	Rollin & Kathryn Salsbery	Scott Shock & Jean Lee	Diane Stevens	Keaton Thatcher	Nalina van Dam	The Rev. Carol Westpfahl
Cara Peterson	Valerie Reinke	Dick Samyn	Rich Shordt & Locke Loeb	Nancy Stevens	Olive Theodore	Courtney van Stolk	The Rev. Canon Richard C. Weyls
Jenny Peterson	Adam Reiser	Doug Sanborn & The Rev. Cn. Dr. Marda Steedman Sanborn	Julie Shryock	Cameron Stenson & Courtney Wendel-Stenson	Da May Thi	Shornton Van Valin	Linda Wheadon
Bruce & Mona Peterson	Curtis Reiss	Christopher Sande	Kathy Shuman	Jennifer Stevens	Claire Thomas	Amelia Van Voorhis	The Rev. Gail & Doug Wheatley
Eric Peterson	Jana Rekosh & Richard Struve	Stephen Sandoval	Michelle Siberr	Janelle Stevenson	Lee Thomas	Jen & Chris van Wesep	Deanna Whetsell
Adam Petri & Aimee Brown	Rao Remala	Josh & Amanda Sandoz	Minette Sicard	Skye Stewart	Sarah Thomas	Gerard & Nancy van Wesep	Carolyn Elizabeth White
Christina Petrie	Adrian Rentz	Karen Sanford	Max Silverman	Sheila Stickel	Mary Anne & Shawn Thomas	Nate van Wesep	Bill & Mary Whitlock
Stacia Pew	Haley Retka	Min Sang Song	John Simmons	Carsten Stinn	The Very Rev. Steven L. & Katherine M. Thomason	Mark & Mary van Wesep	Ned Whitman
Ryan Peyovich	Ann Revelle	Ansel Sanger	Roger Simon	Diane Stipp	Kathy & Rob Thompson	Emma Vander Ende	Fred Whittlesey
Brian Pham	Wendy Rexin	Graciela Santana	Susan Simonson	Derek L. Stirewalt	Laurie Thompson	John Vanderlee	Stephen & Rebecca Whyte
Charlotte Phillippe	Jen Rheuben	Oliver Santos & Gareth King	Eugenie Simpson	Vera Stirling	David O. Thompson	Susan J. Vanek	Ben & Angie Wicks
Shannon Phillips	Aubrie Rice	David & Janet Saucer	Donald Simpson	Nancy Stokley	Alexandra & Alan Thompson	Jill Vanneman	Erin Wigger & Matthew Sz wajkos
Anne Phye Palmer	Sheila Richardson & David Moe	Laura Saunders	Claire Sims	Maya Stone	Vivian Varela	Vivian Varela	KJ Wik
Justin Pierce	Perris Richter	Michael Savio	Emily Sinclair	Jane & Chuck Stone-cipher	Carlos Vargas Valdes & The Rev. Robert Stevens	Carlos Vargas Valdes & The Rev. Robert Stevens	The Rev. Hollis R. & Katherine B. Williams
Alex Pierott	Gary & Kathryn Rickert	Lalie Scandiuzzi	Arron Siverson	Marcy Stone-Francois	Kelly Thorpe	Kelly Thorpe	Herb Williams
Mary Pigott	Megan Rider	Victoria Scarlett & Joseph Anderson	The Most Rev. Melissa Skelton & The Rev. Eric Stroo	James Stoner	Mackenzie Throne	Rebecca Vaux & Kerim Aydin	Anne Williams
David Piper & Christopher Ortiz	Marc Rieke & Paul Kelsay	Frederik Schaffalitzky	Rebecca & Jason Skoog	Cole Story	Genevieve Tietjen	Alyssa Venera Braun	Michelle Williams
Sandra Piscitello	Jill Riemer	Madelynn Scherrer	Leanne Skooglund	Priscilla Strand	Billy Tilson	Bria Vicenti	Tisch Williams
Cait & Steve Platz	Emily Riesser & Thomas Sunderland	Kathryn Schipper	Naomi Skudler	The Streat Family	The Rev. Pam & Dave Tinsley	Ruie Victory	Tim Willis & Natalie Tapias
Lane Platz	Chris J. Rigos	Angela Schmidt	Leah Slagle	Kristina Stredwick	K. Todd	Anne Viggiano	Kenneth & Rosemary Willman
Lawrence & Teresa Plutko	Michelle Ringgold	Eulalie Schneider	Georgia Sleeth	Peter & Diana Stroble	Scott Stuart & Rebecca Amos Stuart	Joshua Viramontes	Alec Willmart & Melissa Plagemann
The Rev. Esther Poirier	Marjorie & Ed Ringness	Nicole Schnitzler	Colleen Sloan	Zack Strom	John Stuntebeck & Chris Lokotsch	Sigma Vitalis	Pat Wilshusen
The Rev. Martin Pommerenke	Molly Ringo & Bradley Wiens	Jo Schoenecker	Page Smith	Karen Strouse	Walter M. Stuteville	Madeline Voight	Jan & Larry Wilson
Marty & Carolyn Pompermayer	Rachel Rische	Sophie Schoenmeyer	Nicole & Chad Smith	Karla Strutzel	Neal & Nan Sullins	Elise von Koschem-bahr	Joanna Wilson
Judy Poon	Rachel Rische	Rachel Schowalter	Sherry Smith & Matt Huston	Scott Stuart & Rebecca Amos Stuart	Kathleen Sullivan	Matthew Vroman	John Wilson
David Poortinga	Jon Riss	Susan Schowalter	The Rev. Richard Smith	John Stuntebeck & Chris Lokotsch	Katherine & Neal Sullivan	Karen Wacome	Tracey Winkelman
Katie Portante	Carol & Kin Ritchie	Stephanie Schrankel	Anne Smith	Walter M. Stuteville	Dawn Torres	Debra Waddell	Katie Woelffer
Molly Porter Wilcox & James Wilcox	Evan Ritter	Stephanie Schrankel	Pete Smith	Neal & Nan Sullins	Nicholas M. Towle	Kiyaan Wadhvani	Angie Wolf
Robert & Pam Porter	Kevin Roach	Kiri Schultz & Michael Wills	Zachary Smith	John Stuntebeck & Chris Lokotsch	Marcie & Dan Towle	Ryan Wagner	Rebecca Wolfe
Sam Posner	Cathy Roark	Kathryn Schultz	Libby Smith	Walter M. Stuteville	Wendy Townsend	David Carl Wagner	Paula Womack
Weston Powell	Jana Robbins	Davis Schultz	Patricia Smith	Neal & Nan Sullins	Maureen & Tim Travaille	Kelsey Wagner	Natalie Womack
Heather Powers	Rose Roberts	Angela Schumacher	Reid Smith	John Sullivan & Paula Stokes	David Traylor	Colin Wakefield	Jennifer & Tracy Wong
Elinor Powicke	Kellie Roberts	Ronald G. Schwartz	Katie Smoot	Betsy Sullivan	Amy & Miles Treakle	Dewey Walker	Faith & Tyler Woodring
Cindi Pratt	Natalie & Chris Roberts	Anne Schwendiman	Dave Smulyan	Lisa Summerwell	Dante Treglia	Leslie Walker	Tyler Woodruff
Monica Preston	The Rev. Josephine Robertson	Michael D. Scott	Alexander Snow	Jed Summerton	Charlotte Trelease & John Mullin	Tom Walker	Todd Woosley
Stef Price	The Rev. Patricia & George Robertson	Alysia Scott	Genevieve Snow	Kimberly Sumner	Paul Tonnes & David Poston	Julie & Kevin Walsh	Ira Worden
Naomi Price-Lazarus	Adrienne Robideaux	David & Marilynne Scott	Peter & Cheryl Snyder	Eevee Sun	Shannon Toomey	Lauren Walsh	Vonne Worth
Llew Pritchard	Don Robinson	The Rev. Marci Scott-Weis	Hannah Snyder	Gary & Elizabeth Sundem	Sanjuana Torres	Julia Walsh	Megan Wozniak
Kenneth & Kim Pritchard	The Rev. Canon Carla Robinson	Howard Scouten	Katie Snyder	Don & Karrie Sutkus	Dawn Torres	Glenn Walter & Holly Sanders	Jessica Wray
Andrea & Mark Pritchard	The Rev. Betsy Seeger	Tea Sea	Katherine Sodergren	Lexi Suttner	Nicholas M. Towle	Linda A. Wandell	Robert, Cathy, & Raleigh Wright
Tim Pritchard	Sharon Robinson	Michael W. Seewer	Felecia Soeldner	Julia Sutton	Marcie & Dan Towle	Mary & David Wang	Julie Wang
George Pro	Hayden Robinson	Peter & Ellen Seibert	Kristian Soholm	John Swanson & Jan Cranfield	David Carl Wagner	Julie Wang	James & Elizabeth Ward
Barbara Prowant	Meghan Roche	John & Barbara Selberg	Renee Soleil	Louis Sweeny & Diana Bender	Kelsey Wagner	James & Elizabeth Ward	Kit Warfield
Devin Armando Pulliam	Michele Rogers	Jennifer Self	Claude & Susan Soudah	Chris Syers	Maureen & Tim Travaille	Kit Warfield	Cathy Warner
Cordie Puttkammer	Kate Rogers & Rich Smith	Susie Semler	Ancient Souls	The Rev. Roger & Marilyn Sylwester	David Traylor	David & Christine Wright	Sam Washko
Luke Putvin & Callie Bianco	Elizabeth Rolfe	Katherine Senzee	Lindsay Soyer	Evelyn Symons	Amy & Miles Treakle	David & Christine Wright	Hannah Waterman
Quinn Qian	Gavin Ropke	Lauren & The Rev. Nathan Seppi	David & Jannie Spain	Christine Szabadi	Dante Treglia	Craig Wright	Charles Waterman
Jay Quarterman	Andrew & Izzy Rosane	Matt Serwinowski	Brooke Spangler & Jeff Cohen	Victoria Szydowski	Charlotte Trelease & John Mullin	The Rev. James & Dr. T. Mirabella Maeve Wyatt	Jack Turner
Claire Quinlan	Valerie Roseberry	Jane Seskin	Roy & Amy Sparks	Samantha Taber	John Mullin	Michael Wyatt	Atlas Turner
Rodolfo Quinones & Andrea Campos	Jude Rosenberg	Rachel Shaffer	Kate Speltz	Kerry Tadique	Lauren Walsh	Wyman Youth Trust	Jack Turner
Jerry R.	Sarah Roskam	Rachel Shapiro	Ethan Spencer	Susan F. Tait	Julia Walsh	Julia Yanker	Reba Tam
Shalom R.	The Rev. Lindsay Ross-Hunt	Cayla Shaplen	Page Spencer	Louie Talevich	Natalie Watrous	William Yardley	Dan & Elisabeth Tapia
Stephanie Ragland	Catherine Roth	Eyob Sharew	Joe Spieldenner	Reba Tam	Dallas Watson	Linda Yates	Tapia Real Estate
Ilana Rahaman	Beverly Roth	Olivia Sharp	Thijs Spoor	Kelsey Taylor	Jessica Watts	Christine Yokan	Kelsey Tarp
Carolyn Ramamurti	Marsha Rova & Scott Morgan	Katharina Sharpe	David Spring	Trillium Tatchell	Nathan & Donna Way	Susan & Tucker York	Thijs Spoor
The Rev. Claire Ranna	Holly Rowley	Elizabeth Shea	Robert Spring	Tim Tattan	Thomas E. Weaver	Lisa Yost & Wayne Turnberg	Thijs Spoor
Sid & Lindsay Churchward Rao	The Rev. Jay Rozendaal	Robert Sheavly	Robert & Jeanne Spurlock	The Rev. Canon Pat Taylor	Maria Weber	Constance Yost	Thijs Spoor
Judith Raunig-Graham	Meghan RS	Mereda Shelley	St. James Episcopal Church, Cathlamet	James Taylor	Rogers & Julie Weed	Lisa Yost & Wayne Turnberg	Thijs Spoor
Cristian Raygoza	Andrea Rucki	Jack Shepard	St. Luke's Episcopal Church, Seattle	John Taylor	Michael Wehling	Lisa Yost & Wayne Turnberg	Thijs Spoor
Fraser Reach	Kirsten Rue	Miller Sherling	St. Stephen's Episcopal Church, Seattle	Layla Taylor	John Weintraub	Lisa Yost & Wayne Turnberg	Thijs Spoor
Dylan Redeker	Nicole Rule	Renee Sherman	Anna Sherwood	Heather Taylor	Dianna Weis	Lisa Yost & Wayne Turnberg	Thijs Spoor
Nancy & Eugene Reding	Liane Rulifson	Caroline Shevrin	Caroline Shevrin	Bruce & Linda Taylor	Dennis & Grace Welch	Lisa Yost & Wayne Turnberg	Thijs Spoor
Edward & Lisalynn Reed	John Rumpelrein	Gary & Debbie Shibata	Rebecca & Krista Stackhouse	Jennifer Taylor	The Rev. Canon Edie Weller	Lisa Yost & Wayne Turnberg	Thijs Spoor
Vicki & Gary Reed	Katie Russell	Lara Shibata & Patrick Sherman	Colton Staker	James V. Taylor Family Trust	Amber Wellman	Lisa Yost & Wayne Turnberg	Thijs Spoor
Stephanie Reed	Courtney Ryan	Marshall Shier	Ashley Stansbury	Hannah Tennent	Doug Wells	Lisa Yost & Wayne Turnberg	Thijs Spoor
Jill Reeder	Lauren Ryman	The Rev. Polly & John Shigaki	Joyce Stark	Katy Terry & Cormac McGloin	Aileen Wen McGroddy	Lisa Yost & Wayne Turnberg	Thijs Spoor
Anna Joy Reedy	Jan Rystrom	Michael Shilley	Ruth Stark	Ellen Terry	Nova Wendikbo	Lisa Yost & Wayne Turnberg	Thijs Spoor
Russell & Julia Reid	The Rev. Deb Sabino	Sandy Shipman	Oana Stepan	Carole Terry	Branden Wescott	Lisa Yost & Wayne Turnberg	Thijs Spoor
Rob & Penny Reid	Eli Sadow-Hasenberg		Zoe Stephenson & Jascha Little	Melissa Terry	William Wesselhoeft	Lisa Yost & Wayne Turnberg	Thijs Spoor
Bill Reid	Siddhant Sahu			Carolyn King Terry	Megan West	Lisa Yost & Wayne Turnberg	Thijs Spoor
					Kelley & Gary	Lisa Yost & Wayne Turnberg	Thijs Spoor



SAINT MARK'S  
EPISCOPAL CATHEDRAL  
1245 10th Ave East  
Seattle, WA 98102

NON-PROFIT ORG  
US POSTAGE  
PAID  
SEATTLE, WA  
PERMIT NO. 871

THE SAINT MARK'S MUSIC SERIES PRESENTS

***Flentrop Organ Concert***

**Stephen Price, organist**

**SUNDAY, MARCH 22, 2026, 7:30 P.M.**

***Sing My Soul: 500 Years of European Sacred Choral Music***

**Choir of Magdalen College, Oxford**

**TUESDAY, APRIL 14, 2026, 7:30 P.M.**

***All Bach on the Flentrop***

**Renee Anne Louprette, organ**

**FRIDAY, MAY 15, 2026, 7:30 P.M.**

Information and tickets at: [saintmarks.org/concerts](https://saintmarks.org/concerts)

